

**TANCO AUTOWRAP  
380S MODEL 1999  
OPERATORS HANDBOOK  
AND  
PARTS LIST  
WD66-380S-M1099**

## GUARANTEE

Subject as hereunder provided, the Sellers undertake to correct either by repair or at their election by replacement any defect of material or workmanship which occurs in any of its goods within twelve months after delivery of such goods to first user, with the exception of contractors or commercial users when warranty period is six months.

In respect of Autowraps the warranty period is for 12 months or 8000 bales, whichever occurs first.

In respect of Aerways, tine breakage will be assessed on an individual basis in every case.

The term goods when used in this document means the article or articles described in Invoice as sold by the Sellers but does not include equipment or proprietary parts or accessories not manufactured by the Sellers. The Sellers, however, undertake to pass on so far as they legally can to the first user the benefit of any warranty given to the Sellers by the suppliers of such equipment, parts or accessories.

This understanding shall not apply to:-

- (a) Any goods which have been sold by the first user.
- (b) Any goods which have been injured by unfair wear and tear, neglect or improper use.
- (c) Any goods the identification marks of which have been altered or removed.
- (d) Any goods which have not received the basic normal maintenance such as tightening of bolts, nuts, tines, hose connections and fittings and normal lubrication with the recommended lubricant.
- (e) The use of any product on tractors exceeding the recommended horsepower.
- (f) Any goods which have been altered or repaired other than on instruction or with the written approval of the Seller or to which any part not manufactured or having written approval by the Sellers have been fixed.
- (g) Any second-hand goods or part thereof.

Any allegedly defective part or parts returned to the Sellers must be sent carriage paid. No claim for repair or replacement will be entertained unless upon discovery of the alleged defect written notification is sent to the Sellers giving, at the same time, the name of the Buyer from whom the goods were purchased and the date of purchase, together with full details of the alleged defect and the circumstances involved, also the serial number of the machine etc.

The Sellers shall be under no liability to their Buyers and first or subsequent users of their goods or to any other person or persons for loss or damages howsoever arising in respect of either personal injuries or for arising out of, or in any way connected with or arising from the manufacturers sale, handling, repair, maintenance, replacement or use of its goods or the failure or malfunction of any of its goods.

Representation and/or warranties made by any person (including Buyers and employees and other representatives of the Seller) which are inconsistent or conflicting with these conditions are not binding upon the Sellers unless given in writing and signed by a Director of the Sellers.

## CLAIMS.

If you wish to make a claim under guarantee:

- 1: Immediately, stop using the machine.
- 2: List the details of the machine, its serial number and the part number of the damaged part.
- 3: Consult with your Tanco dealer (supplier) and have him forward your claim and the damaged item to Tanco.

## EXTENDED WARRANTY

### Applies only to Film Stretch Unit

SUBJECT TO THE FOLLOWING CONDITIONS:-

1. UPON PURCHASE OF THE TANCO BALE WRAPPING MACHINE, PLEASE COMPLETE AND RETURN THE ATTACHED FORM.
2. THE SERIAL NUMBER IS ON THE CENTRE ROD OF THE K.O. PRE-STRETCH FILM DISPENSER.
3. RETURN THE SLIP DIRECT TO K.O. PRESSURE FRAMES OR TANCO ENGINEERING WITHIN ONE MONTH OF PURCHASE.

UPON RECEIPT, K.O. PRESSURE FRAMES LIMITED WILL WARRANTY THE FILM TENSIONING UNIT FOR 2 YEARS FROM DATE OF PURCHASE SUBJECT TO THE TERMS AND CONDITIONS OF THE TANCO MACHINE WARRANTY AND SUBJECT TO THE CORRECT LUBRICATION OF THE FILM DISPENSERS GEARBOX, WHEREBY ONE SHOT OF GREASE EVERY 500 BALES. USE ONLY NLGA 0 GRADE LITHIUM GREASE, WE RECOMMEND SILKOLENE G46 SL EP GREASE OR APPROVED EQUIVALENT, i.e. ESSO BEACON EPO.

**WARRANTY RETURN FORM**

PURCHASERS

NAME:.....

ADDRESS:.....

POST CODE:..... COUNTRY:.....

TELEPHONE NO:.....

FAX NO:.....

K.O.P.F. DISPENSER SERIAL NUMBER(S):.....

TANCO AUTOWRAP SERIAL NUMBER(S):.....

DATE OF PURCHASE:.....

*PLEASE RETURN TO: K. O. PRESSURE FRAMES LTD,  
UNIT 3, CHIDDINGSTONE, CAUSEWAYESTATE,  
NR. PENSHURST, KENT TN11 8JU.  
ENGLAND.*

OR *TANCO ENGINEERING CO. BAGENALSTOWN, CO. CARLOW,  
EIRE.*

INDEX	380S MODEL	PAGE NO
GENERAL SAFETY INSTRUCTIONS		1/2/3
SAFETY INSTRUCTIONS		4
SAFETY DECALS		5
TECHNICAL SPECIFICATIONS		6
PRE-DELIVERY INSTRUCTIONS		7/8/9
TRANSPORT INSTRUCTIONS		10
MACHINE IDENTIFICATION		10
PREPARATION OF A NEW MACHINE		10
HYDRAULIC CONNECTIONS		10
RDS SILACOUNT		11/12/13/14/15/16/17/18
OPERATING INSTRUCTIONS		19
WARNING: LIFT ARM		19
FILM OVERLAP SYSTEM		20
SERVICE AND MAINTENANCE		21/22
FILM THREADING DIAGRAM		23
GEARBOX CHAIN DRIVE TENSIONING SYSTEM		24
TURNTABLE CHAIN DRIVE TENSIONING SYSTEM		25
FILM ADAPTOR OPERATING INSTRUCTIONS		26
HYDRAULIC CIRCUIT DIAGRAM 380S MODEL		27
HYDRAULIC COMPONENTS 380S MODEL		28
PARTS LIST FOR ABOVE		29
CONSTANT INDEXING DRIVE ASSEMBLY		30
PARTS LIST FOR ABOVE		31
AUTOWRAP ILLUSTRATED		32
PARTS LIST FOR ABOVE		33
TURNTABLE CHAIN DRIVE ASSEMBLY		34
PARTS LIST FOR ABOVE		35
LIFT ARM ASSEMBLY		36
PARTS LIST FOR ABOVE		37
FILM DISPENSING SYSTEM 580S MODEL		38
PARTS LIST FOR ABOVE		39
FAULT FINDING SUMMARY		40
TURNTABLE LOCKING ARRANEMENT		41
SENSOR AND MAGNET MOUNTING BRACKETS		42
HYDRAULIC BALE RAMP		43
PARTS LIST FOR ABOVE		44
LIGHTING KIT		45

## GENERAL SAFETY RECOMMENDATIONS

Before operating the machine, always ensure that the tractor and machine meet with work safety and road traffic regulations.

### BASIC PRINCIPLES

- 1: In addition to the recommendations given in this manual, legislation on work safety and accident prevention must also be respected.
- 2: Advice is indicated on the machine, specifying safety recommendations in order to prevent accidents.
- 3: Before travelling on public roads, the operator must ensure that the machine conforms to road traffic regulations.
- 4: Before starting work, the operator must be familiar with all machine controls, handline devices and their functions. once at work, it is too late to do this!
- 5: Do not wear loose clothing which could become caught up in moving elements.
- 6: The tractor should be equipped with a safety cab.
- 7: Before starting up the machine and beginning work, check the surrounding area (beware of children!) . make sure there is sufficient visibility. Keep all people and animals away from the danger zone of the machine (risk of projection!).
- 8: Carrying people or animals on the machine when working or in transport is strictly forbidden.
- 9: Machine must only be attached to tractor using means provided and in accordance with current safety standards.
- 10: Special care should be taken when attaching or removing the machine from the tractor.
- 11: Before transporting the machine on public roads, ensure that all legally required guards and indicators (lights, reflectors ... ) are in place and in good operation.
- 12: All operating controls (cords, cables, rods etc.) must be positioned so that they cannot be set off accidentally, risking accident or damage.
- 13: Before travelling on public roads, put the machine into its transport position as instructed in this operators manual.
- 14: Never leave the tractor seat while the machine is operating.
- 15: Drive speed must be adapted to ground conditions as well as to roads and paths. Always avoid abrupt changes of direction.
- 16: Before operating the machine, ensure that all safety guards are firmly in place and in good condition. If worn or damaged, replace immediately.
- 17: Before operating the machine, check the tightness of all nuts and bolts, particularly on fixing elements (blades, tines, knives, spades etc.,)
- 18: Keep clear of the machine operating area.
- 19: **WARNING!** Danger of crushing and shearing can exist when components are operated by hydraulic or pneumatic controls.
- 20: Before leaving the tractor or before adjusting, maintaining or repairing the machine, turn off the engine, remove the ignition key and wait until all moving parts have come to a complete stop.

- 21: Do not stand between the tractor and the machine unless the hand brake is tight and/or stops have been placed under the wheels.
- 22: Before any adjustments, maintenance or repairs are carried out, ensure that the machine cannot be started up accidentally.

#### **ADDITIONAL RECOMMENDATIONS FOR LINKAGE MOUNTED MACHINES**

- 1: Before attaching the machine, ensure that the front tractor axle is sufficiently ballasted. Ballast is to be placed on the supports provided in accordance with instructions of the tractor manufacturer.
- 2: Do not exceed the maximum axle load or the overall transport weight prescribed by the tractor manufacturer.
- 3: Precision steering, tractor adherence, road holding and efficient braking are influenced by the type of implement, weight, ballast of front axle, ground or road conditions. It is therefore of utmost importance to be cautious in every given situation.
- 4: Be particularly cautious when turning corners, paying attention to machine overhang, length, height and weight.

#### **SAFETY RECOMMENDATIONS FOR ATTACHING IMPLEMENTS TO TRACTOR**

- 1: When attaching or removing the machine from the tractor, position hydraulic lift control lever in such a way that it cannot be set off accidentally.
- 2: When attaching the machine to the tractor hydraulic linkage, ensure that diameter of the link pins corresponds to the diameter of the ball joints.
- 3: **WARNING!** Danger of crushing and shearing can exist in the lifting zone of the tractor hydraulic linkage!
- 4: Do not stand between the tractor and the machine when operating the outer lever of the lift mechanism.
- 5: In transport, the machine lift mechanism should be stabilized by tractor tie rods to avoid floatation and side shifting.
- 6: When transporting the machine, lock the hydraulic lift control lever in place so that it cannot be lowered accidentally.

## HYDRAULIC SYSTEM

- 1: **WARNING:** Hydraulic system is under pressure.
- 2: When fitting hydraulic motors or cylinders, ensure that connections have been made correctly, as per manufacturers instructions.
- 3: Before connecting hoses to the tractor hydraulics, ensure that tractor and machine circuits are not under pressure.
- 4: It is strongly recommended that the operator marks the hydraulic connections between tractor and machine to avoid making a wrong connection.  
**WARNING:** Functions could be reversed (for example: lift/lower)
- 5: Check hydraulic hoses regularly! Worn or damaged hoses must be replaced immediately. Replacement parts must be in accordance with the manufacturers recommendations concerning specifications and quality.
- 6: Should a leak be found, take all necessary precautions to avoid accidents.
- 7: Any liquid under pressure (particularly oil from hydraulics) can penetrate the skin and cause severe injury. If injured, see a doctor immediately, there could be a danger of infection.
- 8: Before any adjustments, maintenance or repairs are carried out, lower the machine, depressurize the circuit, turn off the engine and remove the ignition key.

## MAINTENANCE

- 1: Before checking for any machine malfunction and before adjusting, maintaining or repairing the machine turn off engine and remove ignition key.
- 2: Check tightness of nuts and bolts regularly. Retighten if necessary,
- 3: If the machine is raised, prop it up in a stable position before carrying out any maintenance work.
- 4: When replacing a working part, wear protection gloves and use only standardized tools.
- 5: It is forbidden to discard any oil, grease or filters. These must be given to waste disposal organisations to protect the environment.
- 6: Disconnect power source before any work is done to the electric system.
- 7: Check safety guards regularly, particularly those that are subject to wear. Replace immediately if damaged.
- 8: Spare parts used must be in accordance with specifications and standards as defined by the manufacturer. Use only genuine TANCO parts.
- 9: Before any electric welding is carried out on tractor or attached machine, disconnect generator and battery terminals.
- 10: Repairs on elements under pressure or tension (springs, accumulators etc-) must only be carried out by competent persons with standardized equipment.



### **SPECIAL SAFETY INSTRUCTIONS**

1. Stop engine of tractor before working on machine.
2. Put a suitable prop under raised platform before working in this area.
3. Always raise Lift Arm and fit safety prop before transporting machine on public roads.
4. Lift Arms should always be lowered before operating turntable.
5. Ensure platform rollers are parallel to Lift Arm before arm is raised.
6. On Autowrap models fitted with hydraulic bale ramp it is essential that the hydraulic hose is not disconnected from the hydraulic cylinder or hydraulic accumulator. This system is charged under pressure. Also, do not attempt to open the hydraulic accumulator as this is a pressurised unit.

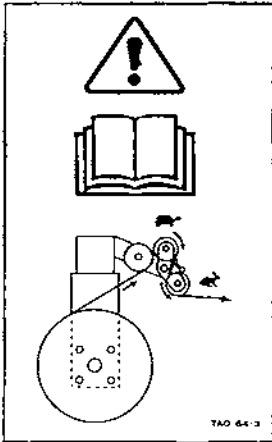
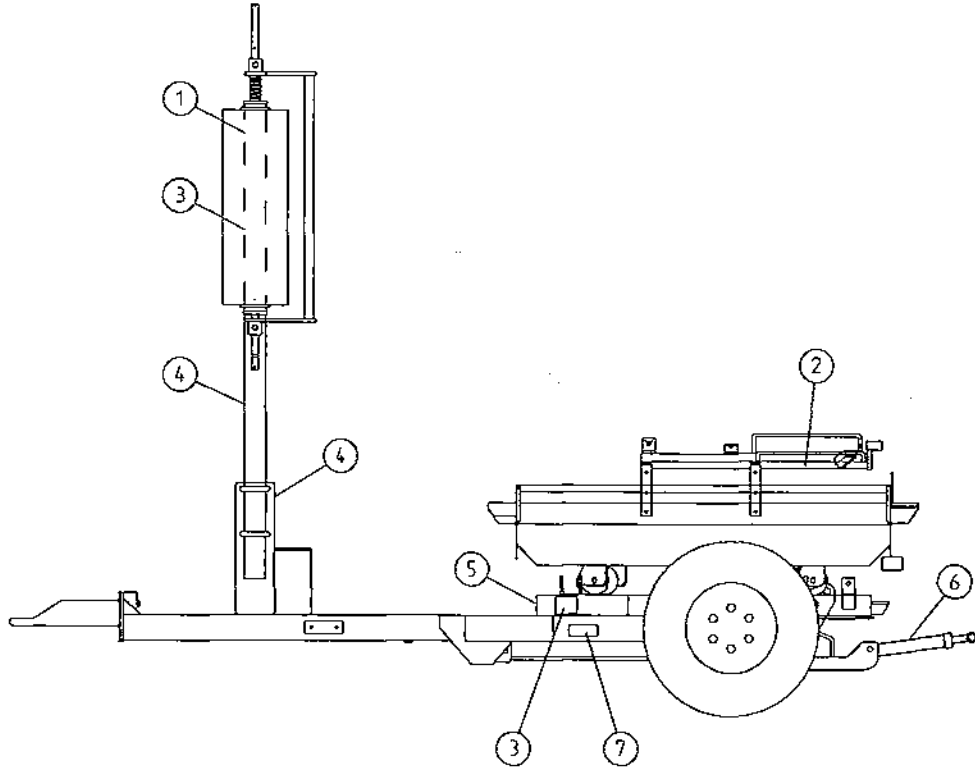
### **OPERATING SAFETY INSTRUCTIONS**

1. Operators should have their hands on the controls at all times when machine is in use.
2. Autowrap control unit and level controls must remain in the tractor cab at all times. The operator must at no time leave the tractor cab when the machine is in motion.
3. Keep onlookers clear of machine at all times. Danger zone is 5 metres.
4. Beware of rotating turntable and all moving parts.
5. If not operated correctly the bale could fly off the turntable. The end support rollers must always be fitted. Do not exceed recommended turntable speed of 30 r.p.m. Mis-shapen bales combined with excessive turntable speeds can be dangerous.
6. Care must be taken when tipping bales from machine on sloping ground and during subsequent handling to ensure that they do not roll, thus causing hazard.

**THINK OF YOUR PERSONAL SAFETY AND THAT OF OTHERS AT ALL TIMES.**

## SAFETY DECALS

The following safety decals have been placed on your machine in the areas indicated. They are intended for your personal safety and for the safety of the people working with you. With this manual, walk around your machine and note the content and location of these warning signs. Review these decals and the operating instructions in the manual with your machine operators. Ensure that these decals are always legible. If they are not replace them.



1. READ OPERATORS MANUAL



2. WARNING: SHARP BLADE



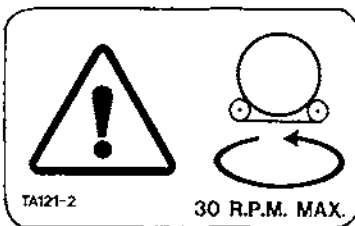
3. DANGER STAND CLEAR



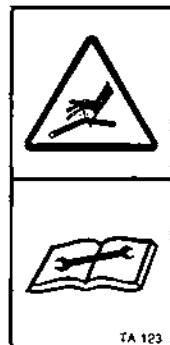
4. BEFORE STARTING MACHINE  
READ OPERATORS MANUAL  
AND SAFETY INSTRUCTIONS



7. ENSURE THAT NUTS ARE  
KEPT TIGHT



5. DO NOT EXCEED TURNTABLE  
SPEED OF 30 R.P.M.



6. BEWARE: HOSES UNDER  
PRESSURE AT ALL TIMES

## TECHNICAL SPECIFICATIONS

### 380S Models Trailed

#### Dimensions

Total length - Excluding Bale Ramp	350cm
Width - excluding lift arm	221cm
" - lift arm fully raised	243cm
" - lift arm lowered	380cm
Height to top of side (bale guide)rollers	110cm
Height to top of lift arm	242cm

#### Weight

With lift arm	1080kgs
Without lift arm	960kgs

#### Wheels

Size	10-80. 12
Pressure	42 P.S.i.

Lift arm capacity - Axle extended normally	750kgs
" " " - Axle extended fully	1000kgs

Speed of turntable	30 rev/min*
Oil requirement	(165kpcm <sup>2</sup> ) 25 lit/min

Attachment to tractor	Tractor Hitch
-----------------------	---------------

Bale Sizes	120 x 120cm up to 150 x 150 cm max weight of 1000kgs
------------	--

Film (Width of Roll)	750mm Optional 500mm
----------------------	-------------------------

The speed of rotation can be varied to suit various conditions but on no account should it exceed 30 r.p.m. (Speed in excess of 30 r.p.m. will void warranty).

## **PRE DELIVERY INSTRUCTIONS**

**IMPORTANT: DO NOT ATTEMPT TO OPERATE UNTIL THE FOLLOWING INSTRUCTIONS ARE PERFORMED OTHERWISE SERIOUS DAMAGE COULD BE CAUSED**

### **1. MACHINE ASSEMBLY**

For ease of transportation some items are removed from their positions and stored elsewhere on the machine. The control box, film dispenser and cut and start unit are stored under the bale belt. Also stored under belt on remote control machines are the infra red receiver and sender units and warning beacon. The film mast is attached to the front of the machine. On round bale machines only, the top rollers c/w mounting brackets and the plastic end rollers are mounted on temporary brackets beside the bale belt. Road wheels, bale lift arm and bale ramp are transported separately. Remove the above items and assemble as detailed in parts list section of this manual taking particular note of the following points.

#### **(i) DISPENSER MAST**

Insert lift mast into socket towards front of machine. Ensure film pull down ram is faced towards the machine. Attach the pull down arm hydraulic ram. Attach the film dispenser to the mast ensuring that the end marked top is faced up. On remote control machines attach the infra-red receiver and warning beacon to top of mast. The film mast height is adjustable. Its height is dependant on bale size and type and is set in the field.

It should be set so that centre line of film is in line with centre of bale. See Fig. 1

#### **(ii) CUT & START**

Attach Cut & Start unit to mounting frame on the left hand side of the machine. It is possible to move the unit along the mounting and f ix it to any of three holes. On all round bale wrapping machines the unit is fixed to the centre hole on the mounting frame. The hose is stored on the turntable frame near the Cut & Start mounting.

#### **(iii) BALE LIFT ARM**

Assemble bale lift arm and attach to mounting points on right hand side of main chassis. Attach hydraulic ram to lift arm; grease pivot pins.

#### **(iv) TOP ROLLERS AND PLASTIC END ROLLERS**

Place plastic end rollers in sockets on the back and front of the turntable. On round bale machines only, attach top rollers and mounting brackets to each side of the machine.

(v) ROAD WHEELS (trailed machines only)

Attach road wheels ensuring that nuts are tight and tyre pressure is 50 p.s.i.

(vi) BALE RAMP OR MAT

Attach bale ramp or mat to rear of chassis. Note Round bale traileed models have bale ramps with an option of hydraulic bale ramp.

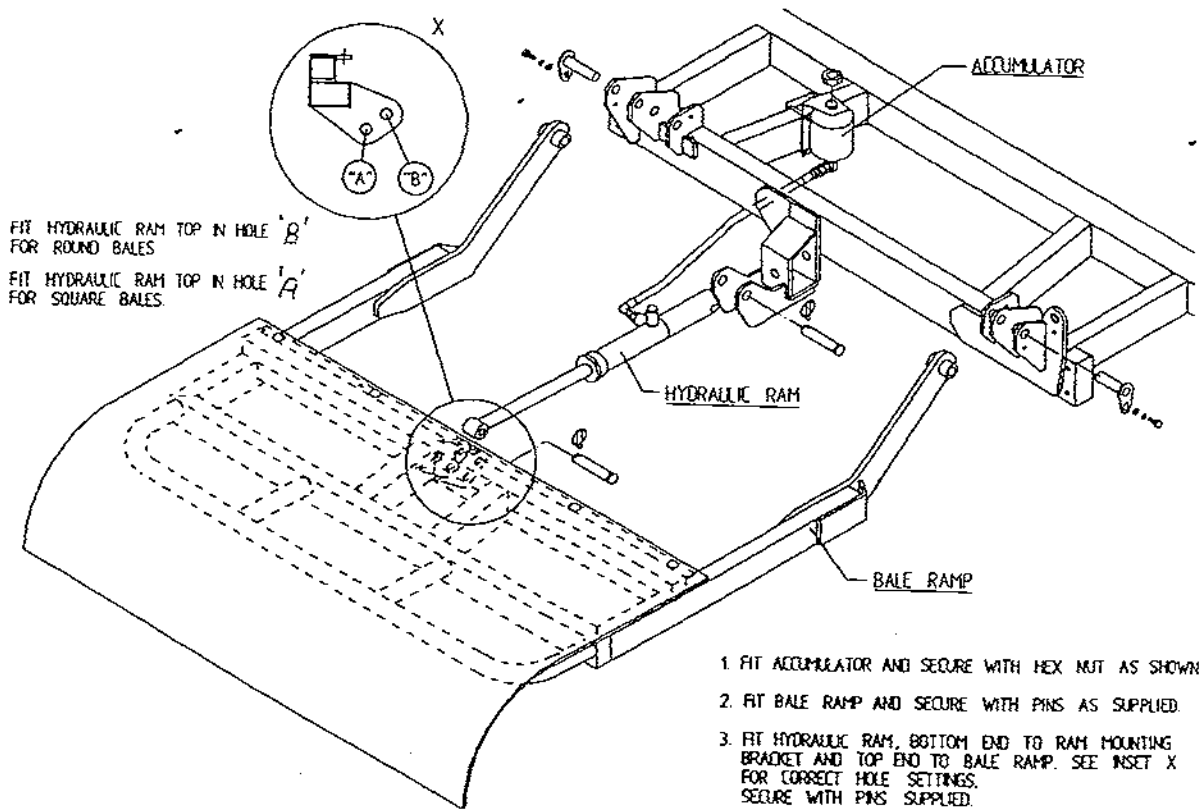
Linkage mounted machines have bale mats. The standard 1050 traileed models have hydraulic bale ramps.

SEE INSTRUCTION BELOW FOR FITTING HYDRAULIC BALE RAMP.

CHECKS TO BE PERFORMED

1. Check that all bolts and nuts are tight.
2. That all lubrication points are greased.
3. Check that all guards are in place.
4. Check all operating and safety stickers are in place.

INSTRUCTIONS FOR FITTING HYDRAULIC BALE RAMP



## 2. OPERATIONAL TEST

When all above assembly and checks have been carried out the operation of the machine should be checked as follows:

**NOTE: IF YOU ARE NOT TOTALLY FAMILIAR WITH THE OPERATION OF THE TANCO CONTROL SYSTEM THIS MANUAL IN FULL BEFORE PROCEEDING WITH OPERATIONAL TEST.**

1. Attach machine to tractor.
2. Connect hydraulic hoses to D/A service on tractor.
3. Fit controller box inside cab.
4. Connect control box to machine and connect power cable direct to tractor battery. It is important that the leads are connected with the correct polarity.
5. Fit cable control actuator socket to convenient position in cab and locate actuators in socket.
6. Lock hydraulic lever in tractor so that oil is flowing through system.
7. Check function by operating control levers.
  - (a) Lift arm up and lift arm down. **NOTE:** ensure lift arm is down before moving to (b).
  - (b) Turntable rotation forward and reverse.
  - (c) Tip up and down checking hoses are o.k.
8. Switch controller on.
9. Switch controller to manual operating mode by operating toggle switch.
10. Check Cut & Start plunger out and in.
11. Switch machine to AUTO mode then run through the wapping cycle. See operating instruction section of this manual on how the machine should perform, and if any function fails to operate correctly consult fault finding section of the operators manual.

## 3. CUSTOMER CHECKS

Before despatching consult customer on the following points:

1. That the machine model suits his requirements.
2. If machine is to be operated on a tractor with a closed centre hydraulic system then a closed centre valve is required, see separate instructions.
3. That the tow hitch type is compatible with the tractor. Three different hitch types are available.

## **TRANSPORT INSTRUCTIONS**

1. Never use straps around the machine when lifting. Use only the following lifting points:- Tow hitch and two sockets on each side of main frame at rear for trailed models. 3 pt. Linkage frame and two sockets on each side of main frame at rear for 3 pt. Linkage Model.
2. When the machine is towed on the road the Lifting Arm (if fitted) must be in the fully raised position, the safety prop fitted and the axle returned to narrowest position.
3. Raise the Parking Jack on trailed models before moving machine-

## **MACHINE IDENTIFICATION**

The Serial Number plate is located on main frame forward of offside wheel on trailed models and on 3pt. Linkage frame for 3pt. Linkage model.

Always refer to this number when ordering parts. The Spare parts catalogue number and description should be used. The reference numbers are used to help identifying the spare part.

For your records write serial number here.

## **SERIAL NO.**

## **PREPARATION OF A NEW MACHINE**

1. Check height of film mast to ensure that centre line of film spool is level with the centre line of the bale on the turntable. This will alter with different bale diameters. If this alignment is not correct more film than necessary will be used. See fig 1.
2. When connected to John Deere\* tractor the valve must be converted to closed centre.

## **HYDRAULIC CONNECTIONS**

Connect the feed and return hoses from the Autowrap valve to the tractor's double acting facility.

NOTE: The return hose is fitted with a non-return valve to protect the Autowrap from damage in the event of incorrect connection to tractor hydraulics.

NOTE: To ensure maximum efficiency and length of lift of hydraulic components this machine requires a clean supply of hydraulic oil.

IT IS RECOMMENDED THAT THE TRACTOR HYDRAULIC FILTER ELEMENT TO BE REPLACED AND THEN, AFTER MAINTAINED IN ACCORDANCE WITH THE MANUFACTURERS RECOMMENDATIONS.

© Copyright 1995 RDS Technology Ltd

Our policy is one of continuous improvement. The information in this document is subject to change without notice.

## Conventions

This document uses the following conventions:

This **typeface** relates to an operator action.

*Ud* and *this typeface* relates to an instrument response.

**NOTE**

Highlights additional information.



Highlights information which if disregarded, may increase the risk of data loss or damage to equipment.

**WARNING!**

Highlights information which if disregarded, may increase the risk of personal injury.

### ELECTROMAGNETIC COMPATIBILITY (EMC)



This product complies with  
Council Directive 89/336/EEC  
when installed and used in accordance  
with the relevant instructions.



## Section 2 - The control switches



There are 3 switches on the front panel used individually or in combination, to programme, set/reset or select a function.

### Programme

---



Press and hold in combination to:


- (i) Set Target Wrap number.
- (ii) Set alarm threshold.
- (iii) Totally reset instrument.

### Set/Reset

---



Press and hold:

- o in combination with  to cycle digits from 0-9 when entering preset values for:
  - (i) Target Wrap number.
  - (ii) Alarm threshold.
- o for 5 seconds to reset part total or Current Wrap number.

### Bale count

---



Press and hold to display bale totals.

### 3.1 Current/Target Wraps display

The lefthand section shows the current number of wraps and the righthand section shows the target number.

When the current number = Target number, the alarm will sound for 2 seconds and the display will flash. (If set, the early warning alarm sounds beforehand). Automatic reset of current number to zero normally occurs 3 seconds after the Target number is reached. If additional wraps are added after the Target number is reached, the current number will continue to advance.

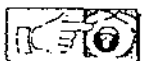


#### Manually reset Current Wraps to zero



Hold.

#### Programme Target Wraps



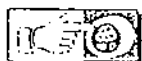
1 Hold continuously.

*Third digit flashes.*



2 Hold to cycle to the desired digit, then release, otherwise press once.

*Fourth digit flashes.*



3 Repeat Step 2.

4 Release all.

#### Programme Early Warning Alarm

An early warning alarm can be programmed to sound from 1 to 9 wraps before the target number is reached. For example, if the bale requires 22 wraps and you want an alarm at 20 wraps, then set the number to 2.

To effectively disable the alarm, set the number to 0.

1 Switch power off.



2 Hold, switch power on and continue holding.

*Fourth digit flashes.*



3 Cycle to the desired number (0-9).

4 Release all.

### 3.2 Part and grand total

When bale wrap is complete, both part and grand totals automatically advance by 1. The part total can be reset at any time. The grand total cannot be reset.

#### Display totals



Hold.

*Part total displays for 8 seconds.*



*4 bars display momentarily*



*Grand total displays for a further 8 seconds, then defaults to the normal display.*



#### Reset part total



Hold with part total displayed.

### 3.3 Total reset

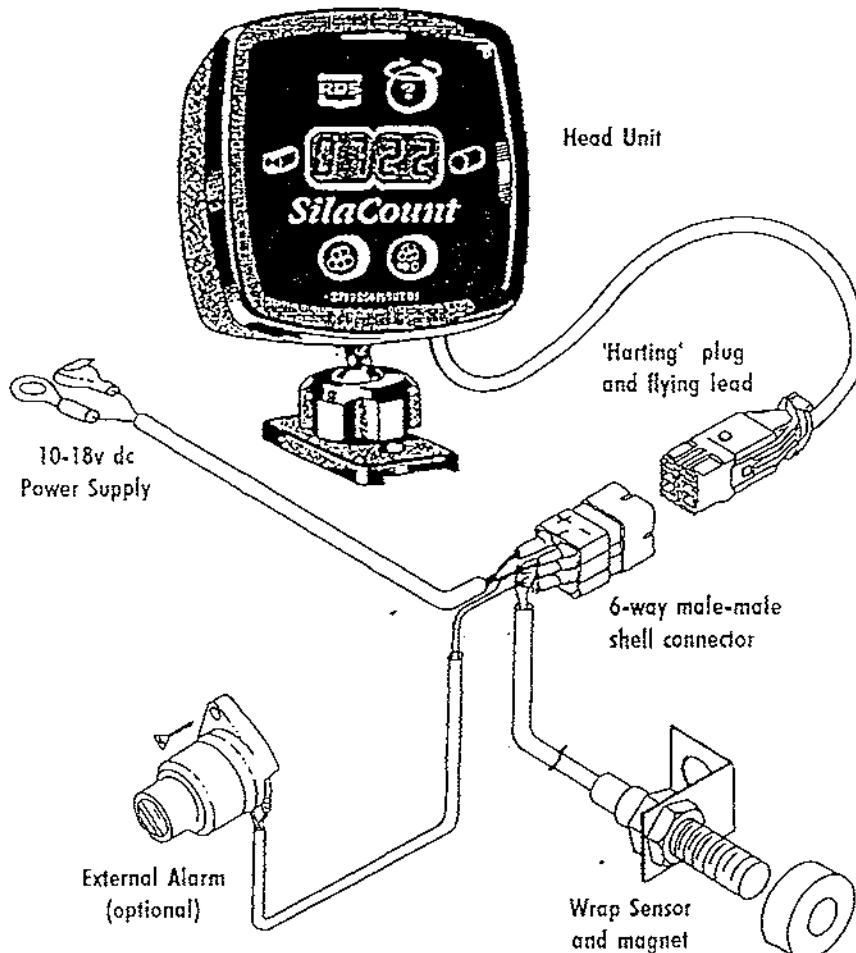
If for some reason the data in the instrument is corrupted or the display shows 'PrOG' then the instrument must be totally reset.

- 1 Switch power off.
- 2 Press and hold all control switches.
- 3 Switch power on.
- 4 Release all switches.

All instrument settings should be returned to the factory-set values. If the display shows 'PrOG' again, the instrument may be faulty and must be returned to the manufacturer for inspection and repair.

### System components

- o Instrument head unit with internal alarm, supplied housed in an instrument pod for versatile mounting.
- o Magnet fixed on the turntable or wrapper arm, operating a stationary wrap sensor.
- o External Audible alarm (Optional).



### Head unit

#### Location

The instrument can be situated in the tractor cab or on the bale wrapper whichever is more convenient for the operator.

Cab-mount in front of the driver, on the dashboard or suspended from the cab roof or corner pillar.

If the bale wrapper is operated from the wrapper, the instrument can be fitted on it. The head unit is waterproof.

**WARNING!**

Do not position the instrument where it may obstruct the operators view or use of existing controls.

### Fixing the instrument pod

The instrument pod can be positioned so that the pod foot is below, on top, or on either side of the head unit.

To change the pod foot orientation,

- 1 Remove the large 'pozi-drive' screw from the rear of the pod.
- 2 Withdraw the inner head unit and turn through 90° or 180°. It may be necessary to re-route the cable underneath the fixing strap.
- 3 Re-assemble the pod and head unit, taking care to locate the cable grommet in the cable slot.

To fix the pod foot,

- 1 Remove the instrument pod completely from the pod foot, by undoing the large nut at the base of the instrument.
- 2 Fix the foot using two No. 8 x 5/8" countersunk self-tapping screws. These require two 3.5mm (9/64") holes.



Do not overtighten the fixing screws.



- 3 Re-mount the instrument pod to the foot.

Do not overtighten the fixing nut.

### 'Harting' Connector

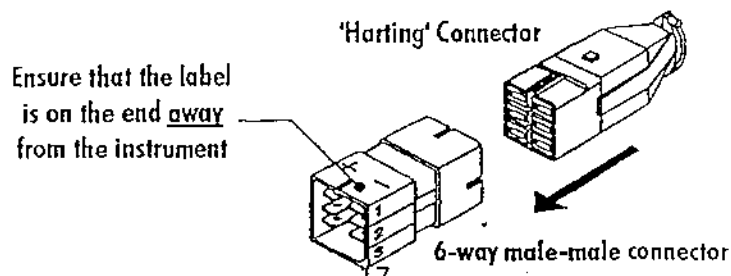
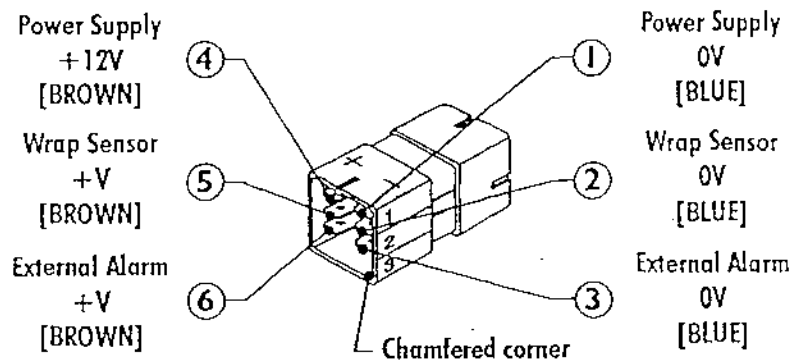
The head unit is supplied with a flying lead terminating in a 6-way connector plug.

Cables are connected to a mating 6-way male-male connector shell, to create a quick release connection between the instrument and the vehicle. This allows the head unit to be easily transferred to another vehicle.

A label on the connector identifies each terminal. Orientation is identified by a chamfered corner and a groove.

#### NOTE

It will be easier to identify the connections by fitting the connector shell onto the flying lead before installation. The labelled end is fitted furthest away from the the flying lead.



### Power supply

#### Cab mounted

Use the two-core cable supplied with female push-on connectors at one end, a ring and a piggyback at the other end.

- 1 Connect the blue wire to terminal 1 and the brown wire to terminal 4 of the shell connector.
- 2 Connect the piggyback connector to a +12v terminal at a switched, fused point on the vehicle electrical system. This may be at the fuse box or on the back of the ignition switch.



5 amp maximum fuse rating.

- 3 Fix the ring terminal under any convenient bolt head.

#### NOTE

Ensure a good earth connection. Check the bolt is fixed to an integral part of the vehicle chassis, free of paint, rust, grease etc.

#### Bale wrapper mounted

Take the power supply from the trailer lighting socket if fitted.

Utilise the two-core cable supplied.

- 1 Cut off the ring and piggyback terminals and strip the wires back 5mm.
- 2 Connect the brown wire (+ve) to terminal 5 (58R) or 7(58L) and the blue wire (-ve) to terminal 3(31) of the lighting plug.  
This will provide power to the instrument when the tractor side lights are switched on.

### External Alarm (optional)

This can be sited anywhere convenient to the operator. It is secured by a single self-tapping screw. If it is fitted on the wrapper it must be protected from direct rain or hosing.

Connect the blue wire to terminal 3 and the brown wire to terminal 6 of the shell connector.

## OPERATING INSTRUCTIONS

1. Fit roll of film and thread through the Dispenser roller assembly by following the instruction label on the film mast.
2. Set the bale wrap indicator to the correct setting for the size of the bale being wrapped and the width of film being used See Table 1 for list of some recommended setting.
3. Power down Lift Arm until wheel is clear of ground and adjust wheel outward to appropriate setting for bale weight.
4. Adjust tractor engine speed to give turntable speed of 16 - 30 r.p.m.  
**NOTE:** Speeds in excess of 30 r.p.m. will void warranty.
5. Position turntable with cut and start unit facing front of machine.
6. Attach film tag end to gripper section of cut and start unit.
7. Rotate turntable anticlockwise through 90 degrees and stop turntable with cut and start unit opposite to lift arm.
8. Locate bale on Lift arm, then raise lift arm and gently roll bale onto turntable. Lower arm.
9. Start wrapping, turntable rotating clockwise. Film tension is automatically set so that width of film applied to the bale stays at approx width of 400 mm for 500mm wide film roll and 600 mm for 750mm wide film roll.
10. Continue wrapping until signal from bale wrap indicator sounds (required number of revolutions has been reached) Then stop with cut and start unit facing towards front of machine and film aligned with gripper section of cut and start unit.
11. Tip bale from machine. When the machine is almost fully tipped the cut and start unit grips and cuts the film and the bale is then unloaded onto the bale ramp.
12. Lower the turntable and rotate anticlockwise through 90 degrees and stop with cut and start unit opposite to lift arm.
13. Repeat operations 7 - 12 as required.

**NOTE:** The film end need only be attached at the start of a roll, after that the sequence is automatic.

## WARNING LIFT ARM

The Lift Arm on the trailed machine is designed to pick up and deposit bales onto the turntable prior to wrapping and to raise the machine while empty, to facilitate adjustment to sliding axle. It is not intended to be used for transporting bales over distances or for use as a stabiliser whilst wrapping.

Therefore, any use of the lift arm outside its primary function will be deemed to be abuse and will void all warranty.

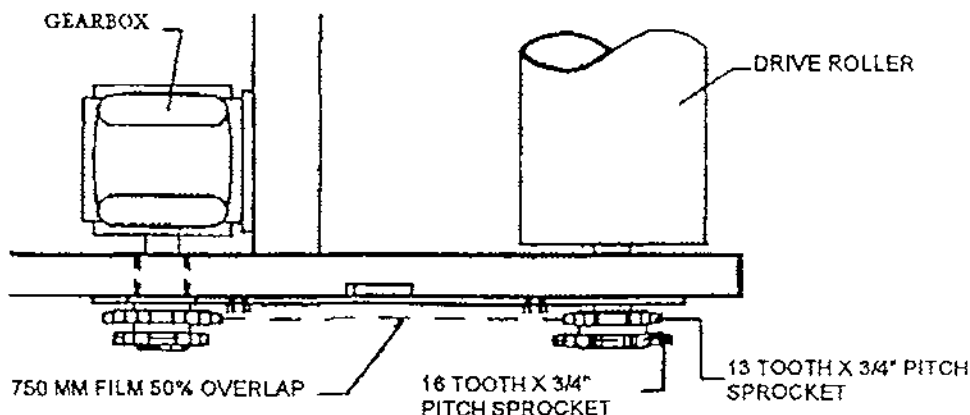
**FILM,OVERLAP SYSTEM.**

The Autowrap is fitted as standard with the 2 x 2 x 50% film overlap system. This is achieved by means of a chain drive which ensures that the correct number of film layers are applied to the bale after a specific number of revolutions of the turntable. The number of revolutions required to wrap a bale depends on width of film being used and bale size - See Table 1 below. The chain to be positioned on inner sprockets for 750mm wide film. Fig. A below.

For silage bales we recommend the application of a minimum of four layers of film.

**Table 1**

Bale Size	Width of Film Roll	Bale Indicator Setting (Revs)
120cm x 120cm	750mm	17
120cm x 137cm	750mm	19
120cm x 150cm	750mm	21



**Fig. A**

**IMPORTANT**

The above recommendations are only offered as a guide to correct wrapping of silage bales and the manufactures accept no responsibility for variations that may arise and the consequence of same. They are based upon turntable speeds of up to 25 r.p.m., and a approx film width of 600mm applied to end bale when using 750mm wide film roll.

It is the responsibility of the operator to ensure the correct number of wraps are applied, as variances can occur with fluctuations in speed of rotation, film quality and tensioning, shape and density of bale etc.



## SERVICE AND MAINTENANCE.

- 1: All nuts and bolts should be tightened after one hour 'm use and thereafter regularly.
- 2: Wheel pressure should be normally kept at 42 psi depending on bale weight and field conditions.
- 3: Inspect moving parts for wear on daily basis.
- 4: Lubrication.

Drive chain & sprocket	Grease every 24 hours.
Main rollers	Grease every 24 hours.
Hinge pins on Lift Arm	Grease every 24 hours.
Hinge pins on main tip frame	Grease every 24 hours
Hydraulic rams	Grease every 24 hours.
Film spool assy	Grease every 24 hours.
Dispenser gearboxes	One shot of Grease every, 500 bales. See 6.
Main spindle	Grease even 4000-5000 bales.

- 5: Adjustments.

Turntable Drive chain:	Adjust after first days work then check/adjust every 50 hours. See Fig. 8
Gearbox Drive chain:	Adjust after first days work then check/adjust every 50 hours. See Fig. 2
Roller Drive chain:	Adjust after first days work then check/adjust every 50 hours. See Fig. 3
Main Bale Belt:	See belt tracking instructions.

- 6: Film Dispenser.

Fit with marked gearbox at top.

Apply one shot of grease every 500 bales Use only **NLGI 0 GRADE LITHIUM GREASE.** We reconunend SILKOLENE G46 SL EP grease or approved equivalent, i.e. ESSO BEACON EPO. Wash rollers often to avoid build up of Tack from film using petrol. Follow film threading diagram. See Fig. 1.

- 7: Film Adjustment.

Centre of film roll must be in line with centre of bale and film mast should be vertical.

8: Shear Pins

There are two shear pins fitted to sprocket assembly on drive roller see fig 5. If the pins shear, remove the broken pins re-align holes and fit two replacement spiral pins, 6mm dia x 20m long, Din 7344 There are two spare shear pins attached to inside of chain guard.

**NOTE:** If shear pins are replaced with other than specified above all warranty is null and void.

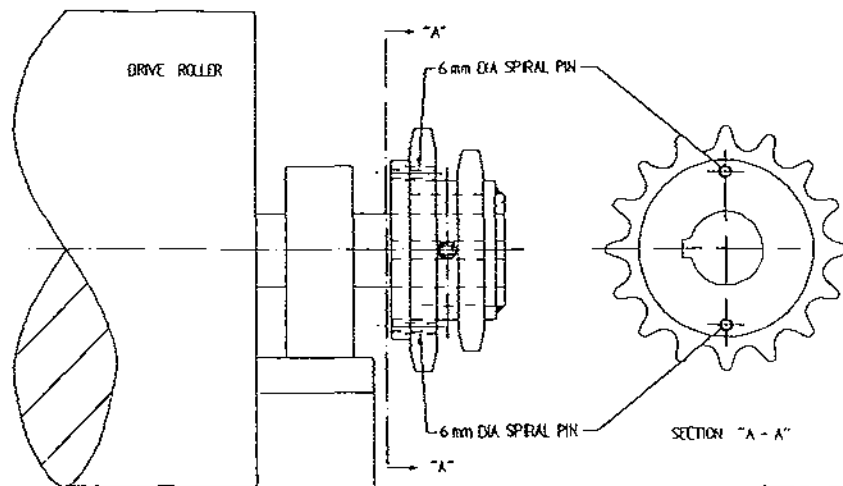
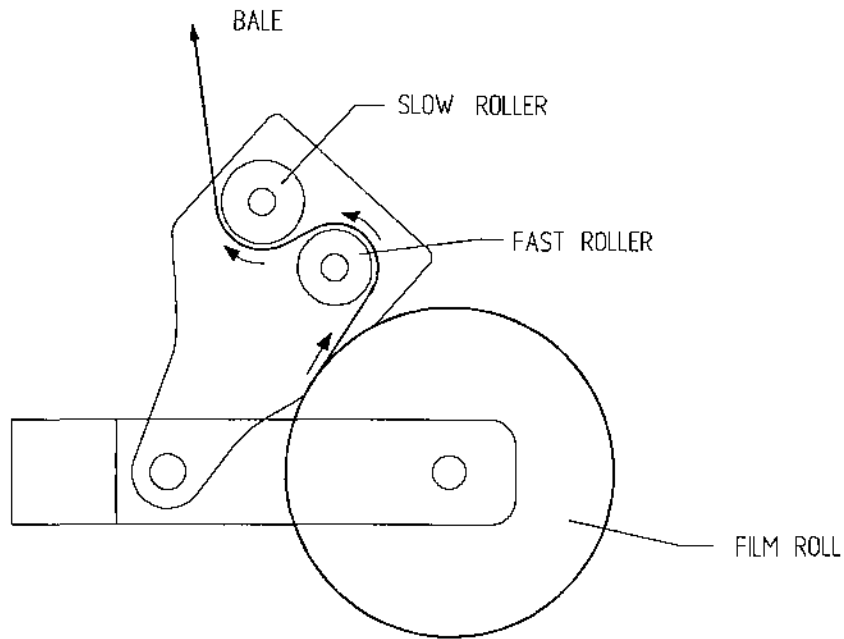


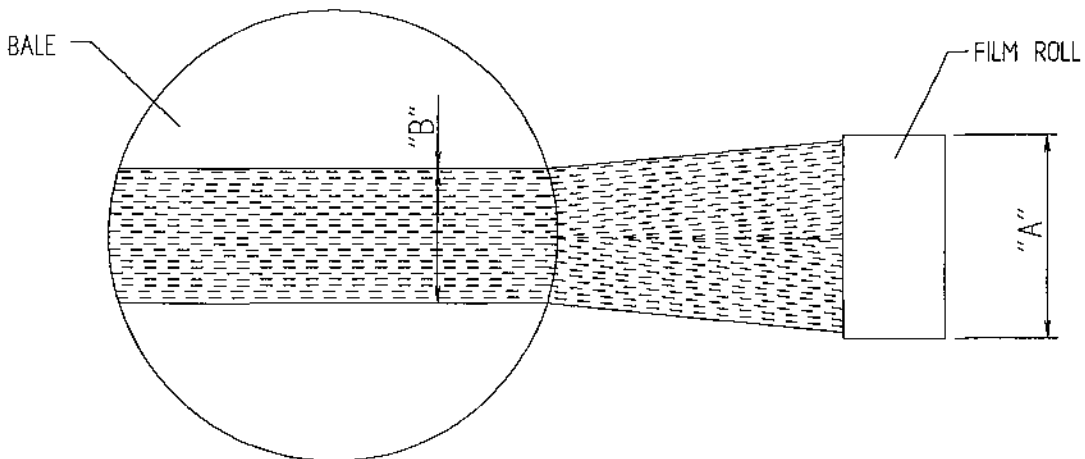
FIG. 5

# TANCO AUTOWRAP FILM THREADING DIAGRAM



## FILM ADJUSTMENT

CENTRE OF FILM ROLL MUST BE IN LINE WITH CENTRE OF BALE AND MAST SHOULD BE VERTICAL.

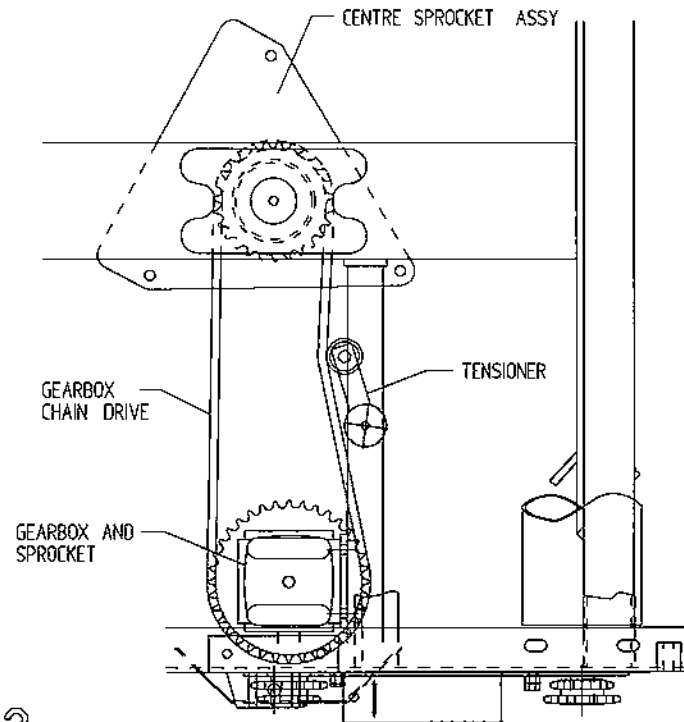


FILM ROLL WIDTH "A"	FILM WIDTH ON END OF BALE "B"
500 mm	400 mm
750 mm	600 mm

Fig. 1

FILE NAME W060-LA21

TANCO AUTOWRAP CONSTANT INDEXING  
GEARBOX CHAIN DRIVE TENSIONING SYSTEM



CHAIN TENSIONING PROCEDURE

1. LOOSEN M10 BOLT SECURING CHAIN TENSIONER.
2. TENSION CHAIN BY ADJUSTING TENSIONER USING SPANNER IN DIRECTION OF ARROW "X" UNTIL SETTING OF 15"-20" IS REACHED.
3. RE-TIGHTEN M10 BOLT TO SECURE TENSIONER IN POSITION.

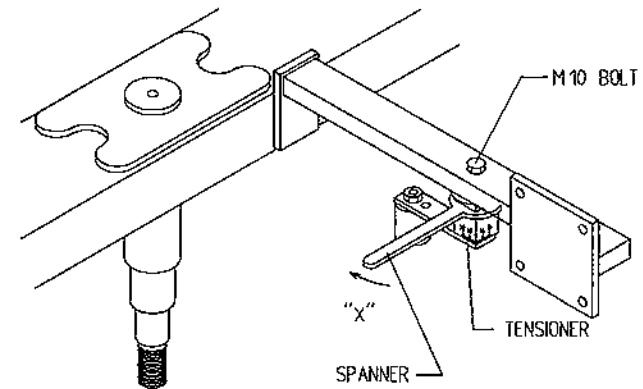
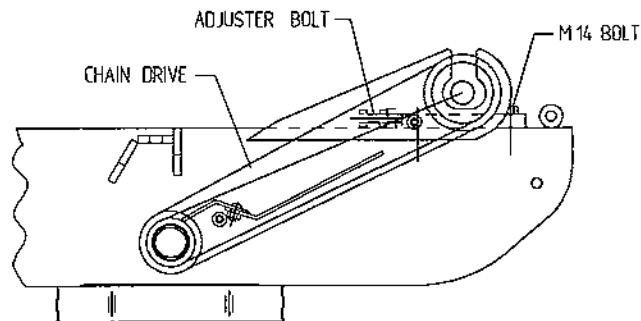


Fig. 2



ROLLER CHAIN DRIVE TENSIONING SYSTEM

CHAIN TENSIONING PROCEDURE

1. LOOSEN M14 BOLTS SECURING BEARING.
2. TENSION CHAIN BY LOOSENING LOCKING NUT AND TURNING ADJUSTER BOLT CLOCKWISE TO TAKE UP SLACK IN CHAIN. SECURE IN POSITION WITH LOCKING NUT. ENSURE EQUAL ADJUSTMENTS ARE MADE ON BOTH SIDES.
3. RE-TIGHTEN M14 BOLTS SECURING BEARINGS TO 170Nm. (125 FT. lbs.).

Fig. 3

# TANCO AUTOWRAP TURNTABLE CHAIN DRIVE TENSIONING SYSTEM

## TENSIONING PROCEDURE

1. TIP UP MACHINE AND SUPPORT WITH A PROP.
2. REMOVE CHAIN GUARD.
3. SLACKEN M12 CLAMPING BOLTS SLIGHTLY.
4. SLACKEN LOCKNUT A.
5. ADJUST NUT B UNTIL THERE IS 8 mm - 10 mm DEFLECTION ON CHAIN.

NOTE WARNING:  
DO NOT OVER TENSION CHAIN AS MOTOR WILL BE DAMAGED

6. TIGHTEN LOCKNUT A.
7. TIGHTEN M12 CLAMPING BOLTS.
8. REFIT CHAIN GUARD.

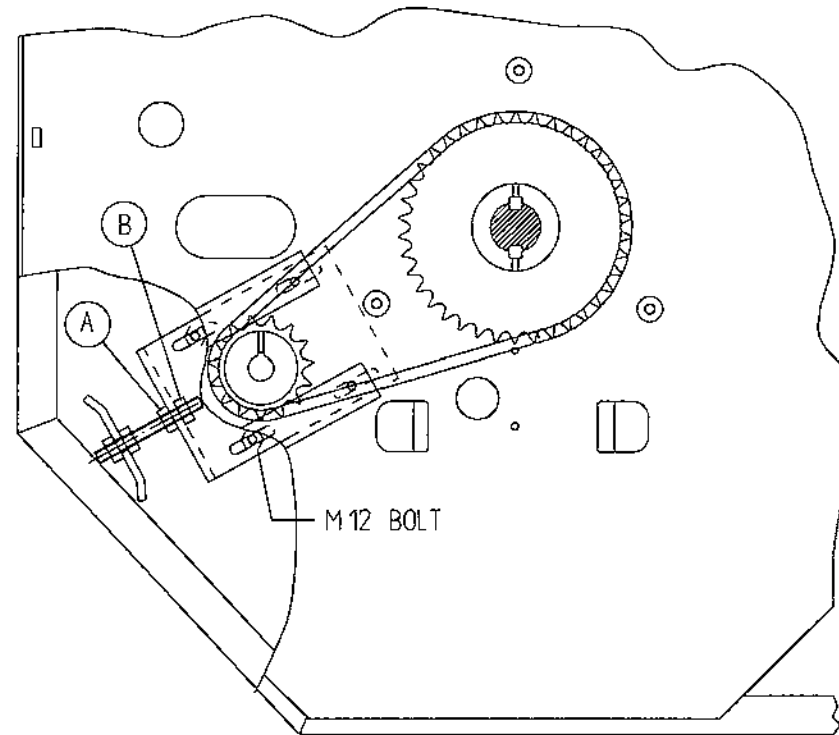
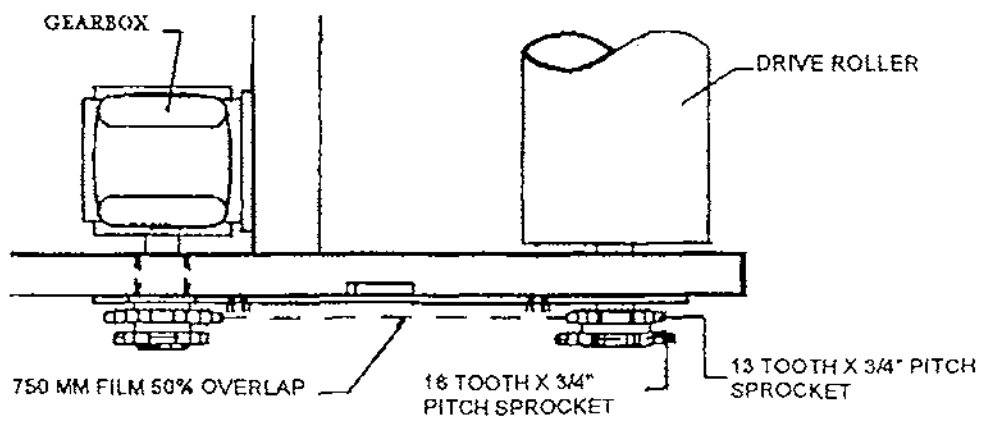
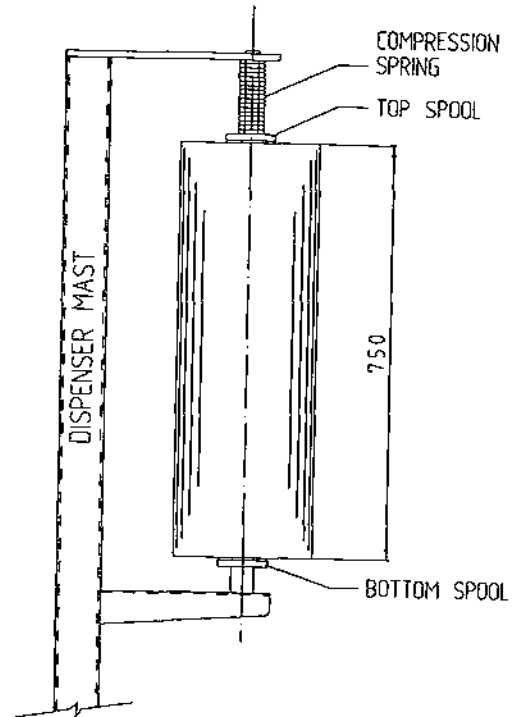


Fig. 8

FILE NAME WD64-LA2

## DISPENSER MAST

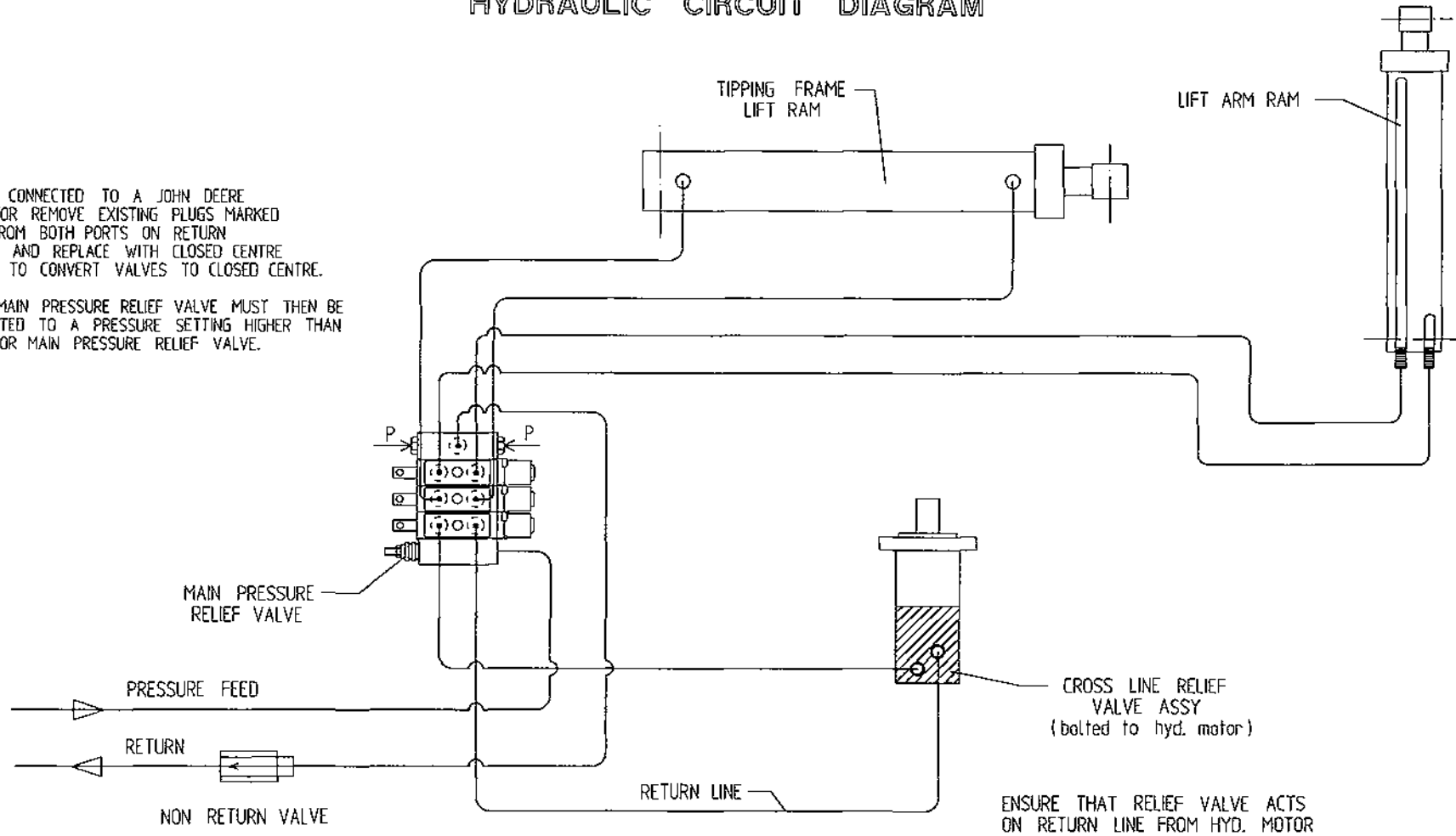
All Autowrap models use 750mm wide film rolls as standard.  
See diagram for fitting roll of film.



# TANCO AUTOWRAP 380S MODEL (TRAILED) HYDRAULIC CIRCUIT DIAGRAM

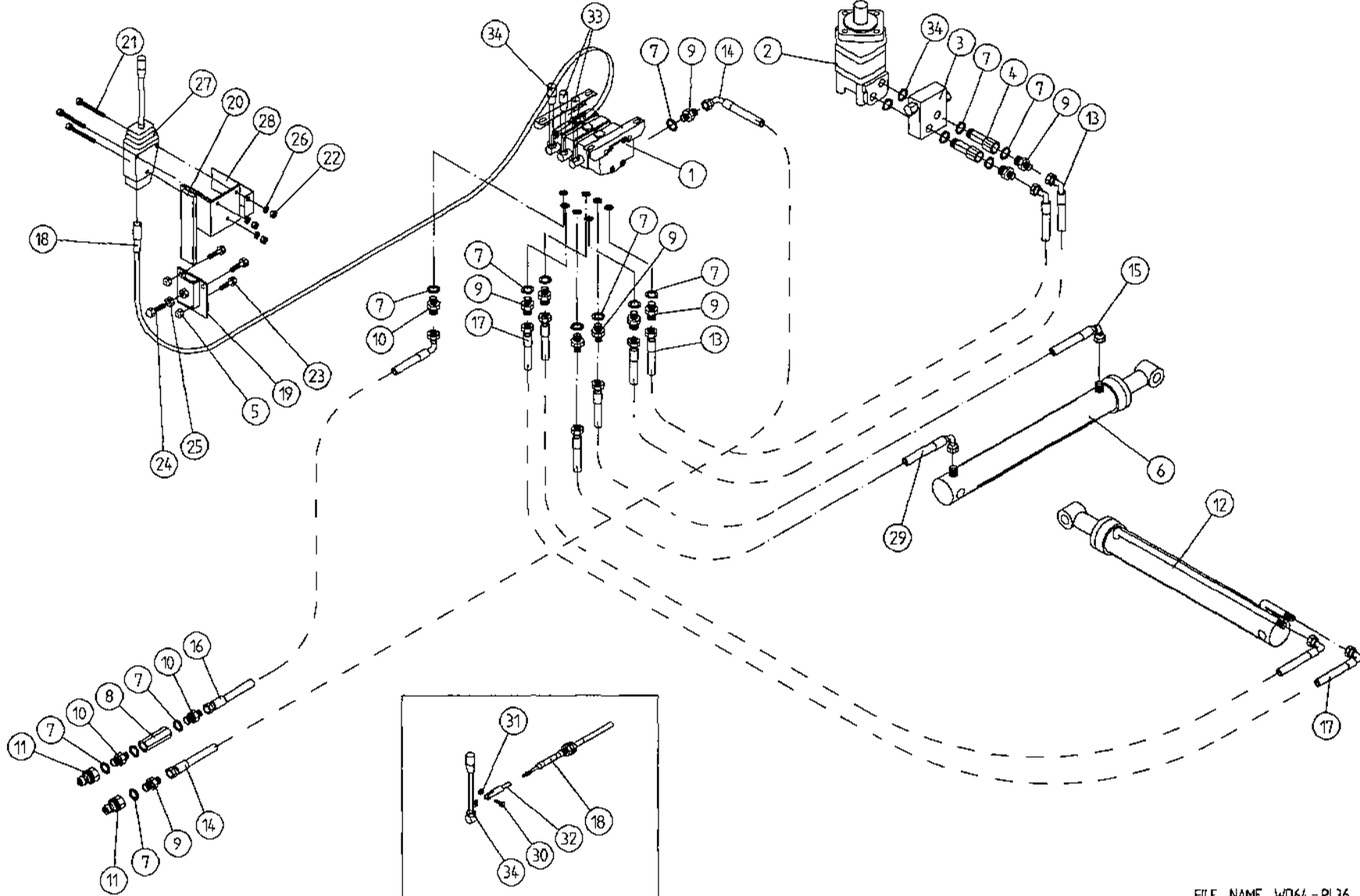
NOTE:  
WHEN CONNECTED TO A JOHN DEERE  
TRACTOR REMOVE EXISTING PLUGS MARKED  
"P" FROM BOTH PORTS ON RETURN  
PLATE AND REPLACE WITH CLOSED CENTRE  
PLUGS TO CONVERT VALVES TO CLOSED CENTRE.

THE MAIN PRESSURE RELIEF VALVE MUST THEN BE  
ADJUSTED TO A PRESSURE SETTING HIGHER THAN  
TRACTOR MAIN PRESSURE RELIEF VALVE.



FILE NAME WD90-PL35

TANCO AUTOWRAP 380S TRAILED MODEL  
HYDRAULIC COMPONENTS





**TANCO AUTOWRAP 380S MODEL (TRAILED)  
HYDRAULIC COMPONENTS (DIN)  
PARTS LIST**

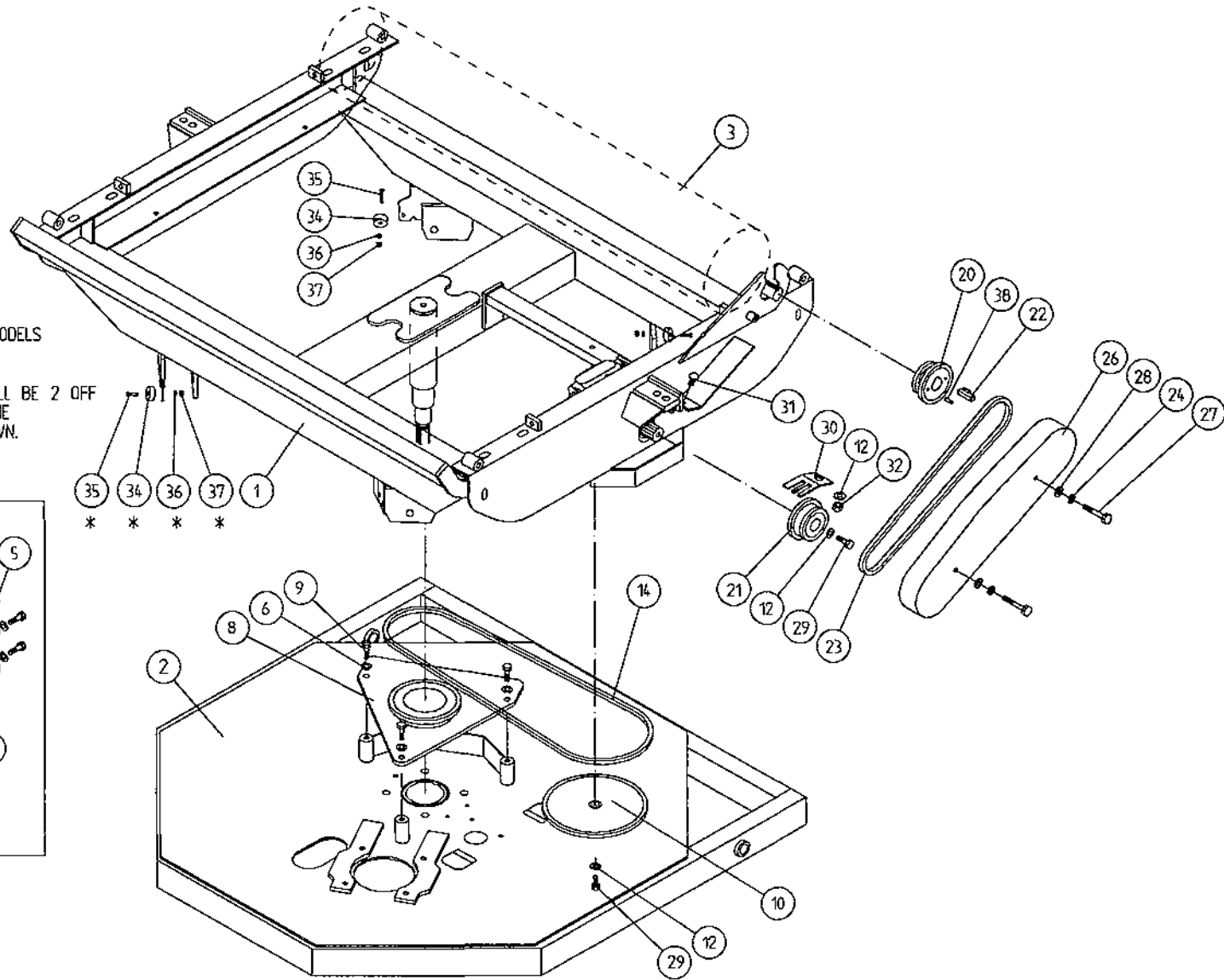
ITEM NO.	DESCRIPTION	QTY.	PART-NO.
1	3 BANK SPOOL VALVE (DIN)	1	Z01-03-018D
2	HYDRAULIC MOTOR (C.L)	1	Z01-024RF200
3	CROSS LINE RELIEF VALVE	1	Z01-03-002
4	1/2" BSP BOTTOM BANJO BOLT (SPECIAL)	2	Z01-03-002B
5	M10 LOCKNUT	3	Z23-10
6	HYD. RAM (FOR TIPPING FRAME)	1	Z01-01-AR687
7	1/2" DOWTY WASHER	16	Z01-04-03
8	1/2" NON RETURN VALVE	1	Z01-03-017
9	1/2" x 3/8" ADAPTOR	10	Z01-06-06-08
10	1/2" x 1/2" ADAPTOR	3	Z01-06-08-08
11	1/2" MALE END Q/R COUPLING	2	Z01-15-081
12	HYD. RAM (FOR LIFT ARM)	1	Z01-01-AW
13	96" ST/90 3/8" D/W HOSE	2	Z38-R2-96-S9
14	84" ST/90 3/8" D/W HOSE	1	Z38-R2-84-S9
15	72" ST/90 3/8" D/W HOSE	1	Z38-R2-72-S9
16	84" ST/90 1/2" S/W HOSE	1	Z12-RI-84-S9
17	108" ST/90 3/8" D/W HOSE	2	Z38-R2-108S9
18	3 1/2" METER ACTUATOR CABLES C/W BULKHEAD END	1	Z004-03-0061 Z004-03-009
19	ACTUATOR MTG. BRACKET (LOWER)	1	WD65-AML
20	ACTUATOR MTG. BRACKET (UPPER)	1	WD65-AMLJ
21	M8 HEX HD BOLT x 65 mm LONG	3	Z26-048B
22	M8 HEX NUT	3	Z18-08
23	M10 HEX HD. SETS x 40mm LONG	3	Z26-064S
24	M12 HEX HD. SET x 40mm LONG	1	Z26-084S
25	M12 HEX NUT	1	Z18-12
26	8mm DIA SPRING WASHER	3	Z12~02-08
27	ACTUATOR LEVER	3	Z004-03-009
28	STICKER MOUNTING PLATE	1	WD60-794
29	60" ST/90 3/8" HOSE	1	Z38-R2- 60-S9
30	M6 HEX HD. SET x 20mm LONG	1	Z26-020S
31	M6 LOCKNUT	1	Z23-06
32	CLEVIS	1	Z004-03-006C
33	LEVER ASSEMBLY	3	WD60-VL
34	COPPER WASHER	2	Z01-04-15

TANCO AUTOWRAP 1999 MODEL

CONSTANT INDEXING DRIVE ASSY

ITEMS MARKED WITH \* ARE POSITIONED AT THIS SIDE OF THE MACHINE ON "S" MODELS AND 1 OFF EACH ITEM IS REQUIRED ONLY.

ON "A" MACHINES QUANTITY REQUIRED WILL BE 2 OFF EACH ITEM AND ARE POSITIONED AT THE OPPOSITE SIDE OF THE MACHINE AS SHOWN.



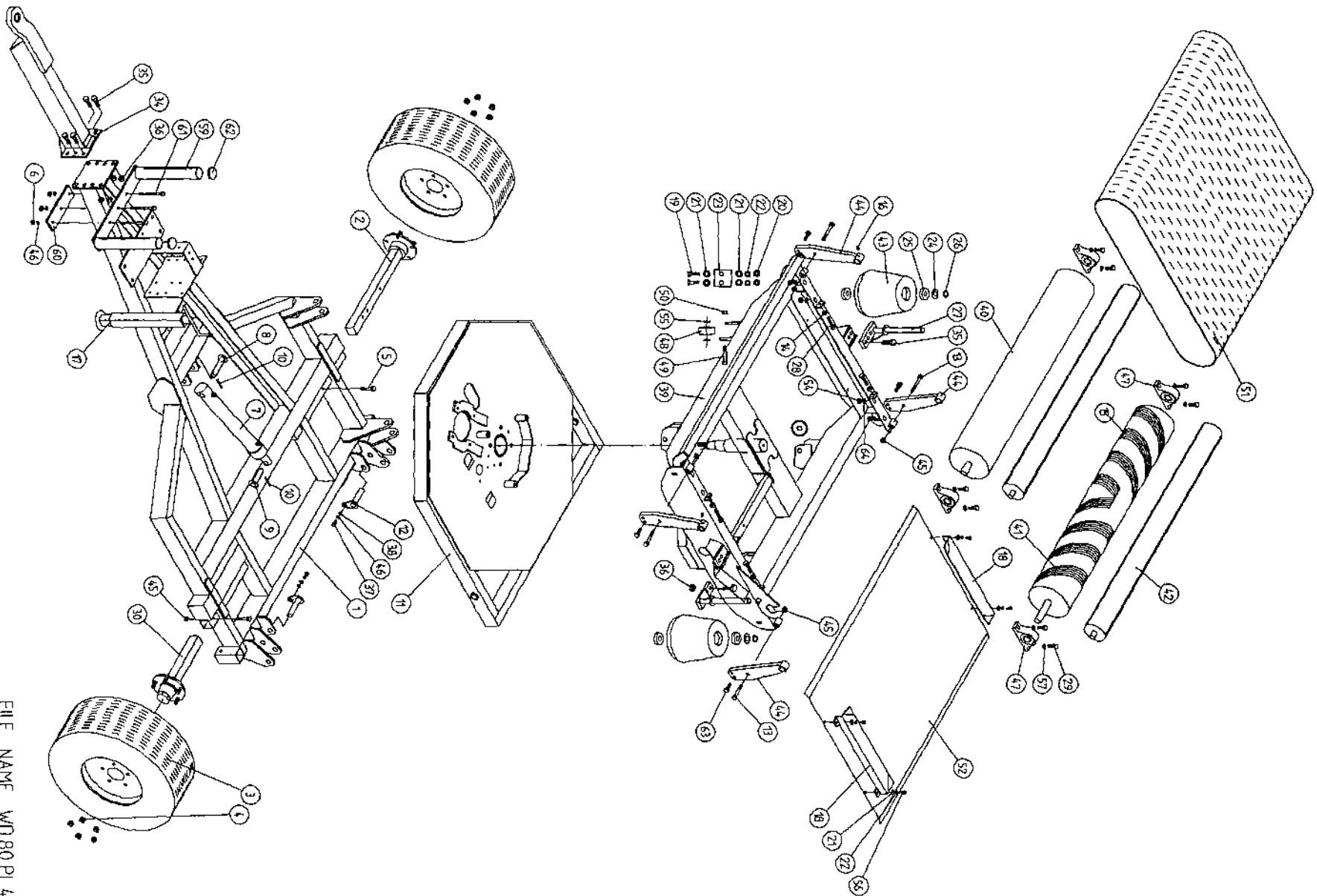
**TANCO AUTOWRAP  
CONSTANT INDEXING DRIVE ASSEMBLY**

**PARTS LIST**

ITEM NO.	DESCRIPTION	QTY.	PART-NO
1	TURNTABLE ASSY.	1	WD67-TA
2	TIPPING FRAME ASSY.	1	WD67-TF
3	DRIVE ROLLER ASSY.	1	WD66-BRD
4	GEAR BOX	1	Z01-25-300
5	M12 HEX HD SET x 30mm LONG	4	Z26-082S
6	12mm DIA SPRING WASHER	7	Z12-02-12
7	CHAIN TENSIONER	1	WD60-CT
8	CENTRE SPROCKET ASSY 27 TOOTH	1	WD64-CSA
9	M12 HEX HD SET x 25mm LONG	3	Z26-081S
10	46 TOOTH SPROCKET	1	Z06-D64-46S
11	M10 HEX HD SET x 25mm LONG	1	Z26-0611S
12	10mm DIA SPRING WASHER	4	Z12-02-10
13	RETAINING COLLAR	1	WD623-071
14	CHAIN 3/4" PITCH X 87 PITCHES	1	Z09-AW-5
15	ROSTA TENSIONING UNIT ARM	1	Z06-454
17	M10 HEX HD BOLT x 65mm LONG	1	Z26-0671B
19	M10 LOCKNUT	1	Z23-10
20	SPROCKET DOUBLE SIMPLEX 13T/16T KEYED	1	Z06-D64-131
21	SPROCKET DOUBLE SIMPLEX 13T/16T SPLINED	1	Z06-D65-131
22	KEY 5/16"x 5/16" x 32mm LONG	1	WD623-K32
23	CHAIN 3/4" PITCH X 6 PITCHES	1	Z09-AW-3
24	1/211 DIA STAR WASHER	2	Z10-01-121
26	CHAIN GUARD	1	WD67-CGC
27	M10 HEX HD SET x 70mm LONG	2	Z26-068B
28	10mm DIA FLAT WASHER	2	Z10-02-10
29	M10 HEX HD SET x 30mm LONG	2	Z26-062S
30	CHAIN STRIPPER	1	WD67-053
31	M10 CUP SQ. SCREW x 30mm LONG	1	Z13-112
32	M10 HEX NUT	1	Z18-10
34*	MAGNET	2	D6043
35*	M6 CSK HD SET x 35mm LONG	2	Z13-132
36*	6mm DIA FLAT WASHER	2	Z11-02-06
37*	M6 LOCKNUT	2	Z23-06
38	SPIRAL PIN	2	Z03-23-062

NOTE: ON "S" MACHINES QUANTITY REQUIRED ON  
ITEMS MARKED WITH \* WILL BE 1 OFF

TANCO AUTOWRAP 380S/580S/580A MODELS

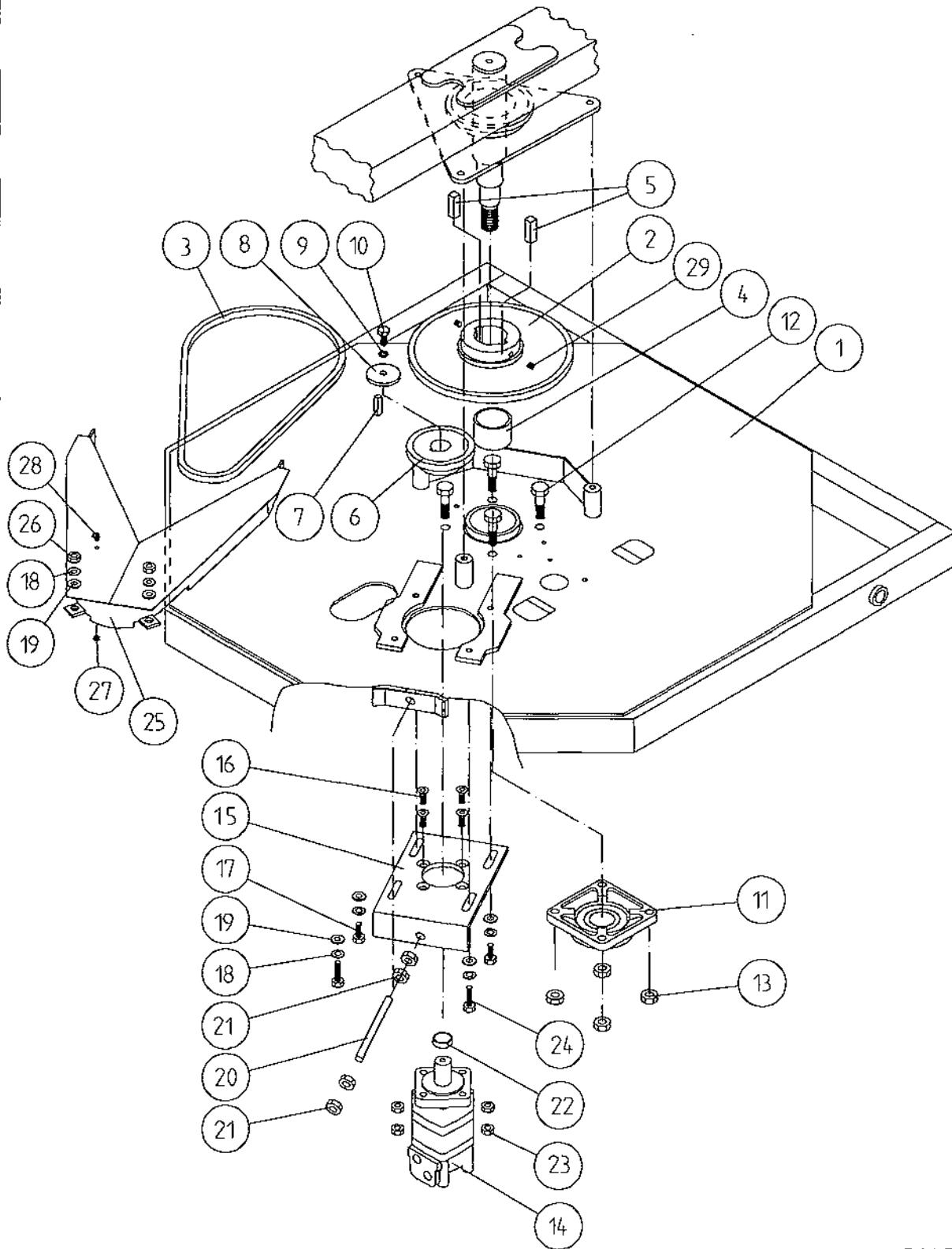


FILE NAME WD80 PL 44

**TANCO AUTOWRAP 380S/580S/580A MODELS (TRAILED)  
PARTS LIST**

ITEM NO:	DESCRIPTION	QTY	PART NO.
1	CHASSIS ASSY	1	WD66-CHA
2	STUB AXLE (LONG)	1	Z04-0336
3	WHEELS (STANDARD WIDTH) (WIDE)	2	Z04-03 Z04-04
4	WHEELS NUTS	10	Z26-091B
5	M12 X 90mm HEX HD BOLT	2	Z03-22-AW82
6	M10 HEX NUT	3	Z18-10
7	HYDRAULIC RAM	1	Z01-01-AR687
8	RAM BOTTOM PIVOT PIN	1	Z03-02-330
9	RAM TOP PIVOT PIN	1	Z03-03-50
10	2" x 1/4" SPLIT PIN	2	Z03-21-29
11	TIPPING FRAME ASSEMBLY	1	WD67-TF
12	TIPPING FRAME PIVOT PIN C/W GREASE NIPPLE	2	Z03-01-9055 Z39-60
13	M12 HEX HD BOLT x 80mm LONG	4	Z26-0901B
14	M12 HEX NUT	4	Z16-12
15	GRIP FACE KIT	2	Z05-02-AW49
16	1/8" B.S.P. ST GREASE NIPPLE	4	Z39-60
17	SCREW JACK ASSEMBLY (WELDED ON)	1	WD60-JA
18	BELT GUIDE ASSEMBLY	2	WD66-BG
19	M8 HEX HD SETS x 20mm LONG	4	Z26-039S
20	M8 HEX NUTS	14	Z18-08
21	8MM DIA FLAT WASHERS (MUD FLAP)	8	Z11-02-081
22	8MM DIA SPRING WASHERS	12	Z12-02-08
23	SCRAPER	2	WD60-711
24	THRUST WASHER	2	WD60-292
25	BEARING (25mm I.D.)	4	Z06-AWRB-93
26	CIRCLIP	2	Z28-525
27	END ROLLER MOUNTING BRACKET	2	WD66-ERH
28	M12 HEX HD SET x 60mm LONG	4	Z26-088S
29	M14 HEX HD SET x 55mm LONG	8	Z26-105S
30	STUB AXLE (SHORT)	1	Z04-032
31	INNER BEARINGS	2	M22AB-209
32	OUTER BEARINGS	2	M22AB-206
33	4mm 'R' CLIP	2	Z36-02
34	RING HITCH ASSY (LONG)	1	WD65-HIT
35	M16 HEX HD SET x 50mm LONG	6	Z2G-124S
36	M16 LOCKNUTS	6	Z23-16
37	M10 HEX HD SET x 25mm LONG	2	Z26-061S
38	10mm DIA MACHINED FLAT WASHER	2	Z11-02-10
39	TURN TABLE ASSY	1	WD67-TA
40	BELT ROLLER ASSY IDLER	1	WD66-BRI
41	BELT ROLLER ASSY DRIVER	1	WD66-BRD
42	SMALL ROLLER ASSY	2	WD66-SMR
43	SIDE ROLLER	2	Z06-AWR
44	ROLLER MOUNTING BRACKET	4	WD66-RMB
45	M12 LOCKNUTS	10	Z23-12
46	10mm DIA SPRING WASHER	5	Z12-02-10
47	1 1/4" PILLOW BLOCK BEARING C/W CAM LOCK COLLAR	4	Z06-485
48	SUPPORT WHEELS (4" DIA)	4	Z06-466
49	AXLE ASSY C/W GREASE NIPPLE	4	Z03-22-AW/AX Z39-60
50	M20 LOCKNUTS	4	Z23-20
51	1200 WIDE x 2475mm LONG x 1/4" FLAT BELT	1	Z05-02AW96
52	TURN TABLE COVER PLATE	1	WD66-043
54	M14 HEX NUT	4	Z18-14
55	SPACER	8	WD60-198
56	M8 HEX HD SET x 30mm LONG	4	Z26-041S
57	14mm DIA FLAT WASHER	8	Z11-02-14
58	M12 HEX HD SET x 30mm LONG	2	Z26-082S
59	FILM TRANSPORT BRACKET	1	WD60-FTB1
60	CLAMPING PLATE	1	WD60-933
61	M10 HEX HD BOLT x 140mm LONG	3	Z26-0726S
62	PLASTIC CAP	2	Z32-08
63	M12 HEX HD SET x 40mm LONG	4	Z26-084S
64	14mm DIA SPRING WASHER	4	Z12-02-14

# TANCO AUTOWRAP TURNTABLE CHAIN DRIVE ASSEMBLY



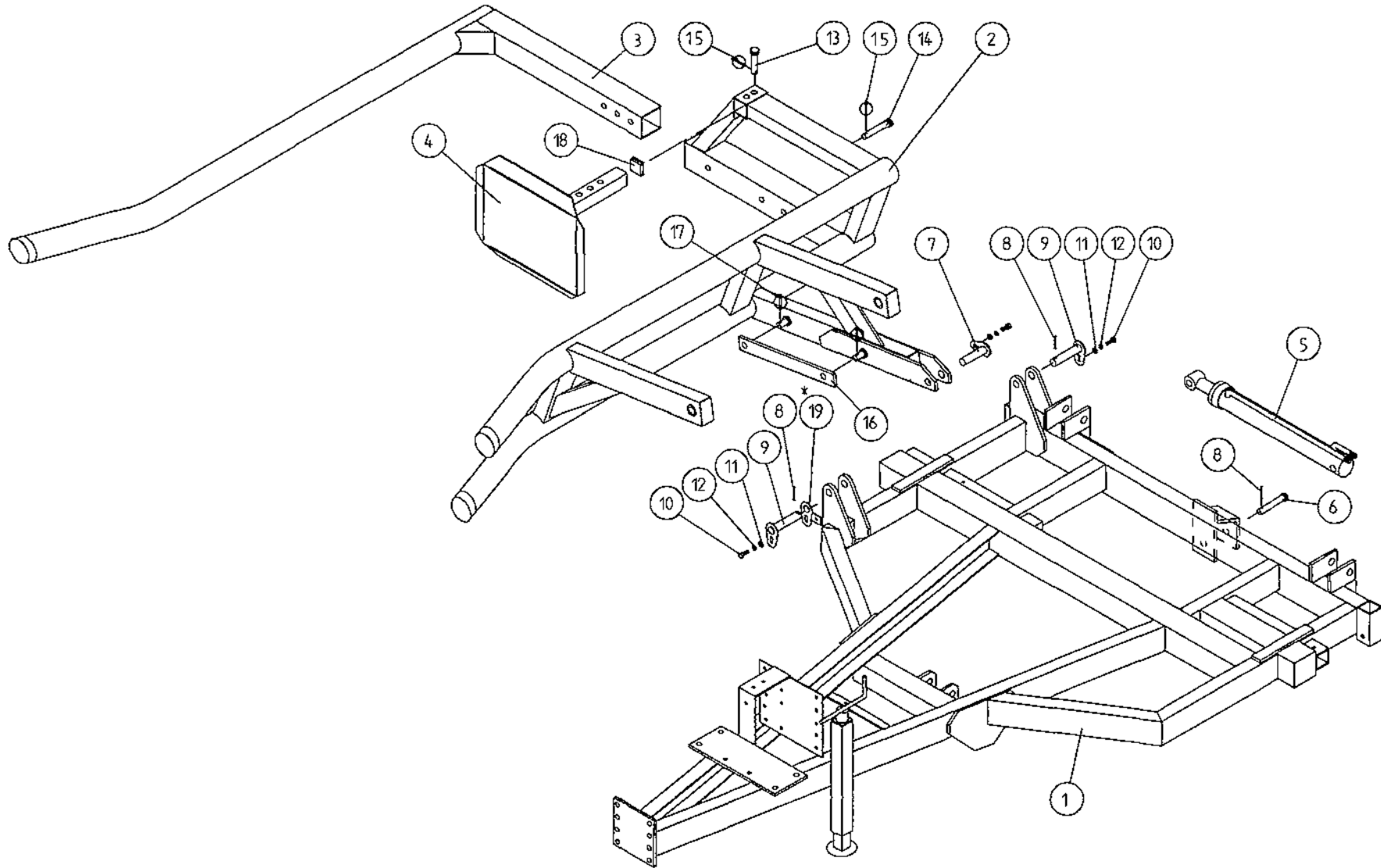
FILE NAME: WD66 PL9

**TANCO AUTOWRAP  
TURNABLE CHAIN DRIVE ASSEMBLY**

**PARTS LIST**

ITEM NO	DESCRIPTION	QTY	PAPT NO
1	TIPPING FRAME ASSY	1	WD67-TF
2	38 TOOTH x 1" PITCH SPROCKET	1	Z06-D64-38
3	CHAIN 1" PITCH x 54 PITCHES	1	Z09-AW6
4	SPINDLE SPACER	1	WD64-040
5	KEY 5/8" SQ x 50mm LONG	2	WD64-052
6	15 TOOTH x 1" PITCH SPROCKET	1	Z06-I60-046
7	KEY 5/16" SQ x 45mm LONG	1	WD64-053.
8	LOCKING COLLAR	1	WD623-071
9	10mm DIA SPRING WASHER	1	Z12-02-10
10	3/8" UNC HEX HD SET x 1" LONG	1	Z27-023S
11	2" DIA FLANGE BEARING C/W CAM LOCK COLLAR	1	Z06-49EC
12	5/8" UNF HEX HD SET x 2" LONG	4	Z31B-064
13	5/8" UNF LOCKNUT	4	Z20-10
14	HYDRAULIC MOTOR	1	Z01-02-RF200
15	HYDRAULIC MOTOR MOUNTING PLATE	1	WD64-001
16	M12 x 50mm ALLEN HD O/S SCREW	4	Z13-5-12X50
17	M12 HEX HD SET x 30mm LONG	4	Z26-082S
18	12mm DIA SPRING WASHER	4	Z12-02-12
19	12mm DIA FLAT WASHER	4	Z10-02-12
20	M16 THREADED BAR x 150mm LONG	1	WD64-038
21	M16 HEX NUT	4	Z18-16
22	SPACER	1	Wi60-093
23	M12 LOCKNUTS	4	Z23-12
24	M12 HEX HD SET x 50mm LONG	2	Z26-086S
25	DRIVE CHAIN GUARD	2	WD66-DCG
26	M12 HEX NUT	2	Z18-12
27	M6 HEX NUT	1	Z18-06
28	M6 90 DEGREE GREASE NIPPLE	1	Z39-65
29	M12 GRUB SCREW x 16mm LONG	2	Z28-012

TANCO AUTOWRAP 380S/580S/580A MODELS  
LIFT ARM ASSEMBLY



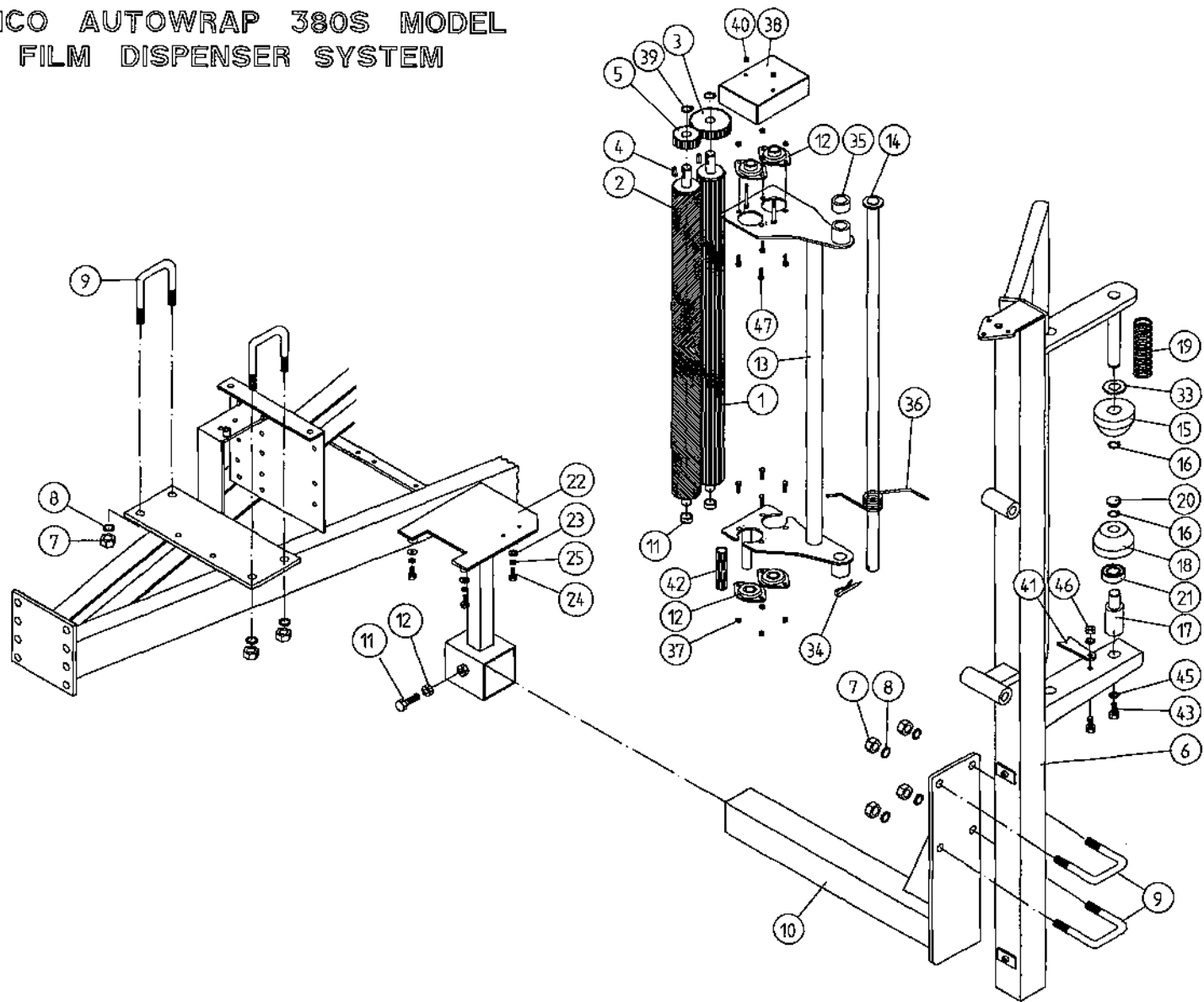


**TANCO AUTOWRAP 380S/580S/580A MODELS  
LIFT ARM AND CHASSIS**

**PARTS LIST**

ITEM NO	DESCRIPTION	QTY	PART NO.
1	CHASSIS ASSEMBLY	1	WD67-CHA
2	LIFT ARM ASSEMBLY	1	WD60-LA
3	ADJUSTABLE OUTER ARM ASSEMBLY	1	WD60-LAAA
4	ADJUSTABLE BALE STOP	1	WD610-LAS
5	HYDRAULIC RAM (LIFT ARM)	1	Z01-01-AW
6	RAM BOTTOM PIVOT PIN	1	Z03-02-330
7	RAM TOP PIVOT PIN	1	Z03-01-905A
8	2" x 1/4"SPLIT PINS	3	Z03-21-29
9	LIFT ARM PIVOT CIW GREASE NIPPLE	2	Z03-01-905
10	M10 HEX HD SET x 25mm LONG (TUFLOCK)	3	Z26-061 S
11	10MM DIA MACHINED FLAT WASHER	3	Z11-02-10
12	10mm DIA SPRING WASHERD	3	Z12-02-10
13	SPAREX PIN	1	Z03-04-73
14	SPAREX PIN	1	Z03-04-77
15	7/16" DIA LINCH PINS	2	Z03-22-06
16	SAFETY SUPPORT BAR	1	WD60-319
17	6mm DIA LINCH PIN	2	Z03-22-03
18	PLASTIC CAP	1	Z32-10

TANCO AUTOWRAP 380S MODEL  
FILM DISPENSER SYSTEM



**TANCO AUTOWRAP 380S MODEL  
FILM DISPENSING SYSTEM  
PARTS LIST**

ITEM NO:	DESCRIPTION:	QTY:	PART NO:
1	INNER ROLLER ASSY	1	D617-JRA
2	OUTER ROLLER ASSY	1	D617-ORA
3	60 T GEAR	1	D617-G60
4	6mm SQ. KEY STEEL x 20mm LONG	2	WD67-KS20
5	40 T GEAR	1	D617-G40
6	DISPENSER MAST	1	WD617-DM
7	M16 HEX NUT	8	Z18-16
8	16mm DIA SPRING WASHER	8	Z12-02-16
9	M16 'U' BOLTS	4	Z35-52
10	DISPENSER MAST MOUNTING BRACKET	1	WD67-DMM
11	3/4" x 10mm SPACER	3	D617-026
12	RHP SLF20A BEARING	5	Z06-17
13	FILM DISPENSER MAIN FRAME	1	WD617-FDMS
14	PIVOT PIN	1	WD617-PP
15	TOP CONE	1	WD90-012
16	CIRCLIP	2	Z28-525
17	FILM SPOOL LOWER	1	WD617-013
18	BOTTOM CONE	1	WD90-013
19	SPRING	1	Z07-07
20	PLASTIC CAP 1 1/4" DIA	1	Z39-60
21	BEARING	1	Z06-AWRB
22	VALVE MOUNTING PLATE ASSY	1	WD67-VMP1
23	8mm DIA MUD FLAP WASHER	4	Z11-02-081
24	M8 x 20mm SET	4	Z26-039S
25	8mm DIA SPRING WASHER	4	Z12-02-08
27	M12 X 50 HEX SET	1	Z26-086S
28	M12 LOCKNUT	1	Z23-12
29	12mm DIA FLAT WASHER	1	Z12-02-12
33	1" DIA FLAT WASHETR	1	Z10-02-30
34	6mm "R" CLIP	1	Z36-03
35	PLATED COLLAR	1	WD617-025
36	TORSION SPRING	1	Z07-04
37	M8 LOCKNUT	2	Z23-06
38	DISPENSER GEARBOX COVER	1	WD617-GC
39	20mm EXTERNAL CIRCLIP	2	Z28-520
40	M6 LOCKNUT	2	Z23-06
41	PLATE LATCH	1	WD617-019
42	PLASTIC HAND GRIP	1	Z32-16
43	M10 x 25mm SET	2	Z26-0611S
45	10mm DIA SPRING WASHER	2	Z12-02-10
46	M10 HEX NUT	1	Z18-10
47	M8 x 20mm HEX SET	8	Z26-039S



## FAULT FINDING

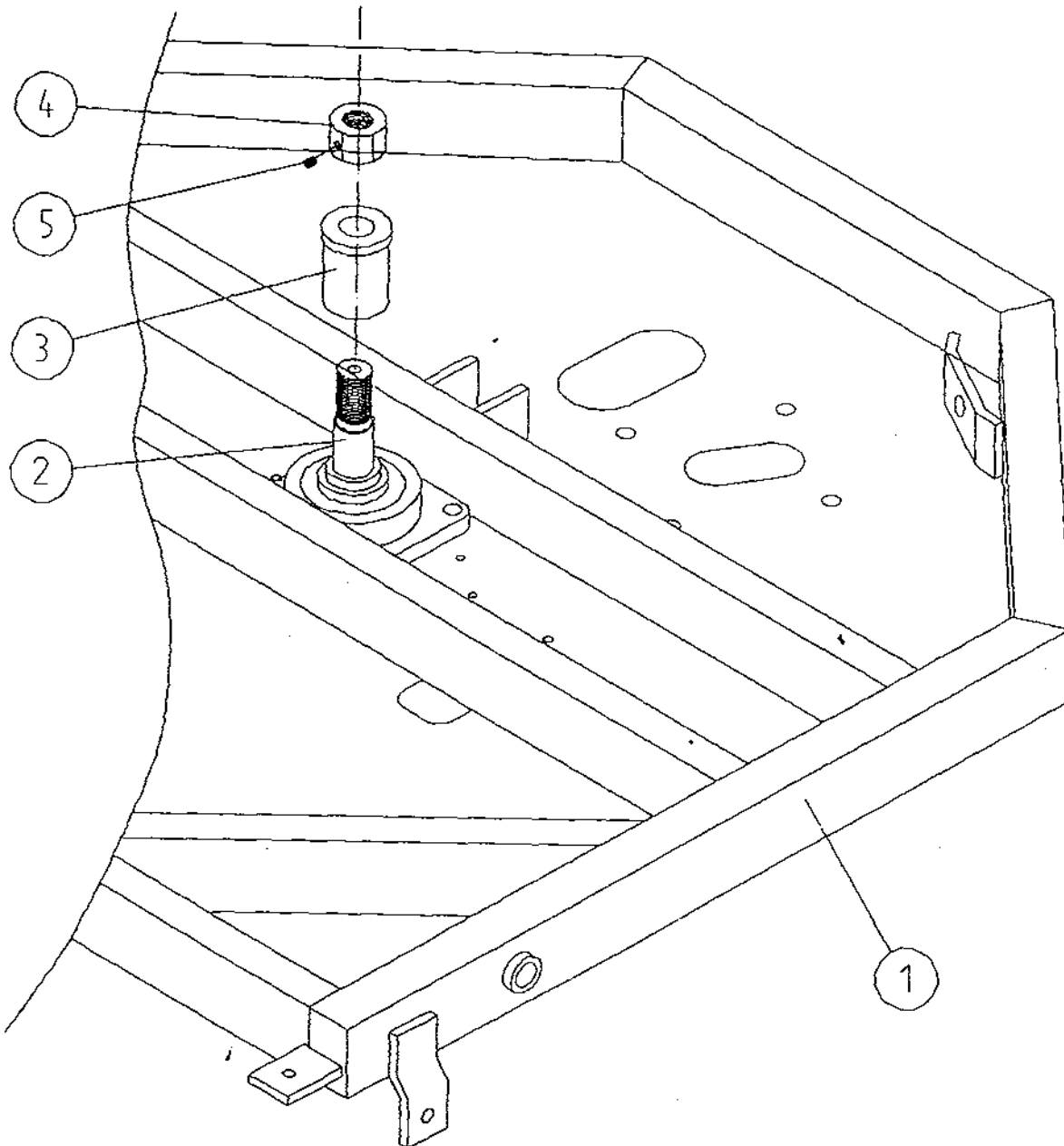
PROBLEMS.	REMEDY.
1. Drive Roller and Bale belt not driving	Check and replace shear Pins in sprocket on drive roller.
2. Film Breaking	Wash off dispenser and slave rollers. Change roll of film. Use recommended films only.
3. Film not wrapping evenly on bale.	Adjust film mast so centre of film roll is aligned with centre of bale .
4. Film Tearing on Ramp.	Check for sharp edges and remove.
5. Bale Skidding on Ramp.	Fit Hessian Bag or piece of carpet to Ramp.
6. Film Dispenser not Pre-Stretching Film.	Check that both Rollers turn when one is turned by hand. If not, fit new gears or replace unit.
7. Tyres coming off 4" platform Support Wheels.	Replace Wheels - Reduce speed below 30 r.p.m. - Do not grease path of wheels on platform. Check that bale does not get trapped between arms and turntable when being loaded.  If this happens lower arm and start again.
8. Hydraulic Bale Ramp not returning to raised position after tipping off bale.	See instructions for recharging hydraulic cylinder.
9. Bale Belt Tracking Adjustment	
(i) Ensure vertical rollers (plastic) are in tight on the bale. Remember that the bale will reduce in size during wrapping and, on the round bales in particular, the corners will become rounded so that the bale will tend to move sideways due to centrifugal forces. Now, if the plastic rollers are too far apart, the bale will move against one of the plastic rollers causing the belt to move in the opposite direction. Always adjust the vertical plastic rollers so that they keep the bale central on the belt.	
(ii) Adjust bale stop on lift arm so that bale is loaded centrally onto platform.	
(iii) Check that bale belt is fitted so arrow points in direction of travel.	
(iv) Check that both 8" rollers underneath the bale belt are parallel to each other. Remember the golden rule - a belt will always move up a slope: So, if the belt continually moves to our side, adjust idler roller to a narrower setting on the opposite side to which the belt travels.	
(v) Check that gripface strips are securely fixed to the roller and have not moved out of alignment.	
(vi) Check that is the same measurement each side by running a string around the belt and measuring it. If one side is longer than the other replace the belt.	

TANCO AUTOWRAP

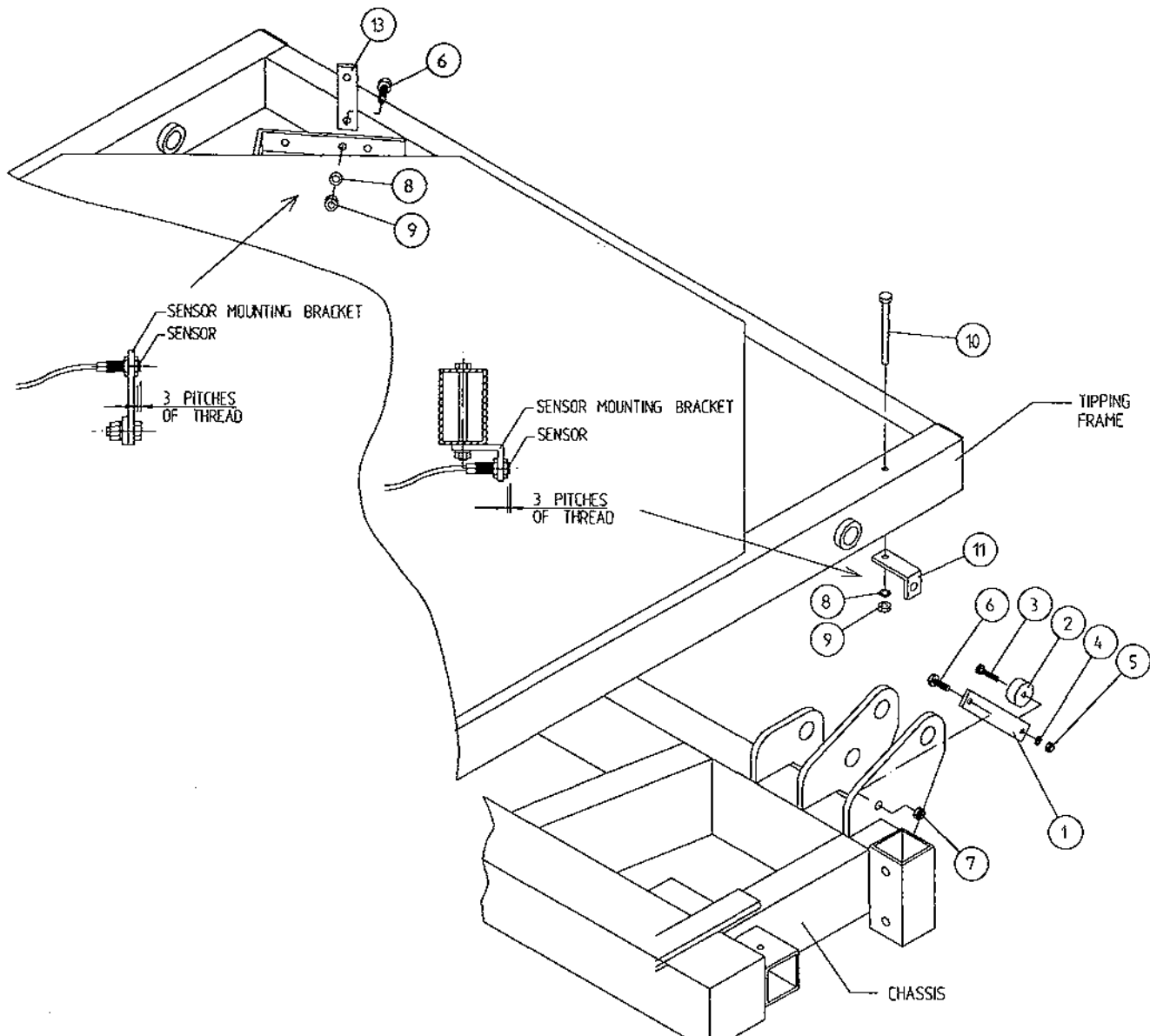
TURNTABLE LOCKING ARRANGEMENT

PARTS LIST

ITEM	DESCRIPTION	QTY	PART NO
1	UNDERSIDE OF TIPPING FRAME	1	WD64-TF
2	TURNTABLE CENTRE SHAFT	1	WD64-002
3	SPINDLE SPACER	1	WD67-SS
4	1 1/4" UNC HEX NUT	1	Z18-300
5	M8 GRUB SCREW X 6MM LONG	1	Z28-007



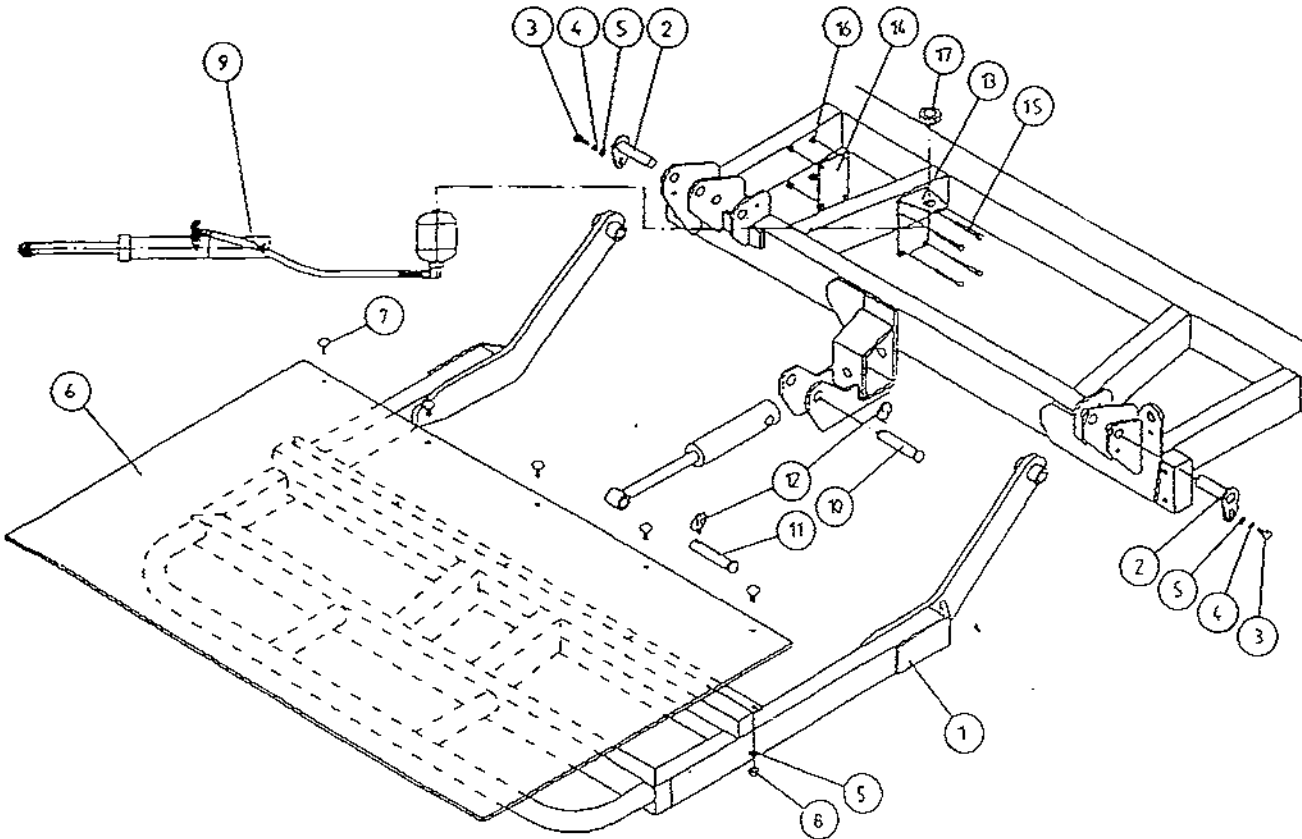
## TANCO AUTOWRAP CUT AND START SENSOR AND MAGNET MOUNTING BRACKETS



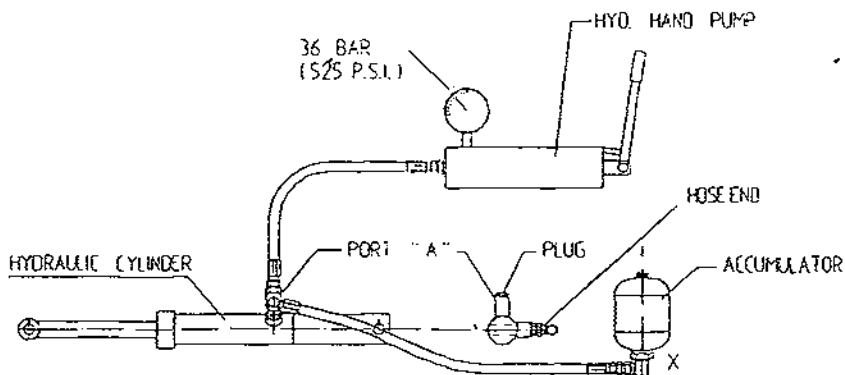
### PARTS LIST

ITEM NO	DESCRIPTION	QTY	PART NO.
1	MAGNET MOUNTING BRACKET	1	WD605-165
2	MAGNET	1	D6034
3	M6 HEX HD. SET x 30mm LONG	1	Z26-022S
4	6mm DIA FLAT WASHER	1	Z12-02-06
5	M6 LOCKNUT	1	Z23-06
6	M8 HEX HD. SET x 25mm LONG	2	Z26-040S
7	M8 LOCKNUT (NYLOCK)	1	Z23-08
8	8mm DIA SPRING WASHER	2	Z12-02-08
9	M8 HEX NUT	2	Z18-08
10	M8 HEX HD. SET x 100mm LONG	1	Z26-057S
11	SENSOR MOUNTING BRACKET	1	WD605-58
12	SENSOR MOUNTING FLAT	1	WD605-164

# TANCO AUTOWAP HYDRAULIC BALE RAMP



## INSTRUCTIONS FOR RECHARGING AND REDUCING PRESSURE IN HYDRAULIC BALE RAMP CYLINDER



### TO RECHARGE CYLINDER:

1. REMOVE PLUG FROM PORT "A".
2. CONNECT HOSE FROM HYD. HAND PUMP TO PORT "A".
3. CHARGE CYLINDER TO A PRESSURE OF 36 BAR (525 P.S.I.)
4. BLEED AIR FROM SYSTEM BY SLACKENING HOSE CONNECTION AT BASE OF ACCUMULATOR MARKED X. RETIGHTEN CONNECTION.
5. REMOVE PUMP HOSE FROM PORT "A" AND REFIT PLUG.

### TO REDUCE PRESSURE IN CYLINDER:

1. SLACKEN CONNECTION ON HOSE END JUST ENOUGH TO ALLOW OIL TO BLEED OUT SLOWLY.
2. RETIGHTEN CONNECTION AND CHECK OPERATION OF BALE RAMP AS DETAILED IN FIG 1.
3. REPEAT PROCEDURE UNTIL OPERATION OF RAMP IS CORRECT.

FILE NAME WD66-PLZE



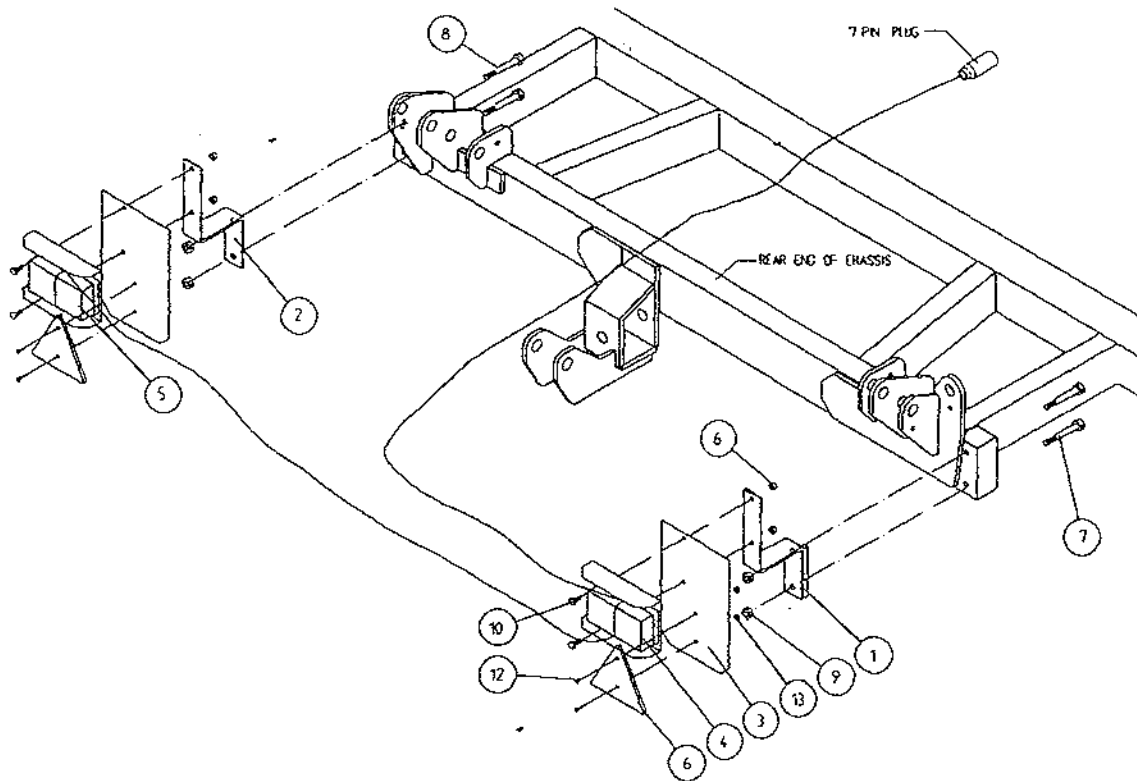
WD64-PL25

TANCO AUTOWRAP MODEL  
HYDRAULIC BALE RAMP

PARTS LIST

ITEM	DESCRIPTION:	QTY:	PART NO:
1	HYDRAULIC BALE RAMP ASSY	1	WD65-HBRF
2	RAMP MAIN PIVOT PIN C/W GREASE NIPPLE	2	Z03-01-905
3	M10 HEX HD SET X 20mm LONG TUFLOCK	2	Z26-060ST
4	10mm DIA MACHINED FLAT WASHER	2	Z11-02-10
5	10mm DIA SPRING WASHER	12	Z12-02-10
6	BALE MAT	1	Z05-02-BRH
7	M10 X 30mm LONG CUP HD.SQ BOLTS	5	Z13-112
8	M10 HEX NUTS	5	Z18-10
9	HYDRAULIC RAM C/W ACCUMULATOR	1	Z01-01-AWD
10	SPAREX PIN	1	Z03-04-74
11	SPAREX PIN	1	Z03-04-73
12	7/16" DIA LINCH PIN	2	Z03-22-06
13	ACCUMULATOR MOUNTING PLATE	1	WD65-AMP
14	CLAMPING PLATE	1	WD65-231
15	M8 HEX HD BOLT X 80mm LONG	4	Z26-050B
16	M8 LOCKNUT	4	Z23-08
17	M28 X 1.5 PITCH HEX NUT	1	Z18-28

**TANCO AUTOWRAP TRAILED MODELS  
LIGHTING KIT**



ITEM NO	DESCRIPTION	QTY	PART-NO.
1.	LIGHT MOUNTING BRACKET RHS	1	WD60-LMB
2.	LIGHT MOUNTING BRACKET LHS	1	WD60-899
3.	LIGHT MOUNTING PLATE	2	WD60-898
4.	LIGHT CLUSTER RHS	1	Z05-30R
5.	LIGHT CLUSTER LHS	1	Z05-30L
6.	TRIANGULAR REFLECTOR	2	Z04-62
7.	M12 HEX HD BOLT X 100 LONG	2	Z26-092B
8.	M12 HEX HD BOLT X 90 LONG	2	Z06-091B
9.	M12 LOCKNUT	4	Z23-12
10.	M8 HEX HD SET X 20 LONG	4	Z26-39S
11.	M8 LOCKNUT	4	Z23-08
12.	M6 CHEESE HEAD SET X 20 LONG	4	Z13-15
13.	M6 LOCKNUT	4	Z23-06

# EC DECLARATION OF CONFORMITY

ACCORDING TO DIRECTIVES 89/392/336/EEC AS AMENDED.

**MANUFACTURER:** TANCO ENGINEERING CO LTD  
BAGENALSTOWN  
CO CARLOW  
IRELAND

**CERTIFIES THAT THE FOLLOWING PRODUCT:**

AUTOWRAP

MODEL: 350-S /

SERIAL NO.: D2600 - D5000

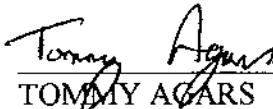
To which this declaration relates, corresponds to the essential requirements of the Directive 89/392/336/EEC as amended.

To conform to these essential health and safety requirements, the provisions of the following harmonised standards were particularly considered:

EN 292 - 1,2, EN 294, EN 1152, prEN 703, prEN 811, prEN 1553, prEN 982.

**DATE:** 01/01/98

**SIGNATURE:**



TOMMY AGARS  
TECHNICAL MANAGER